

FRANKIE'S

Charlotte, North Carolina

EXTERIOR SIGNAGE SUBMITTAL

Submitted: July 28th, 2016
Revised: November 1st, 2017



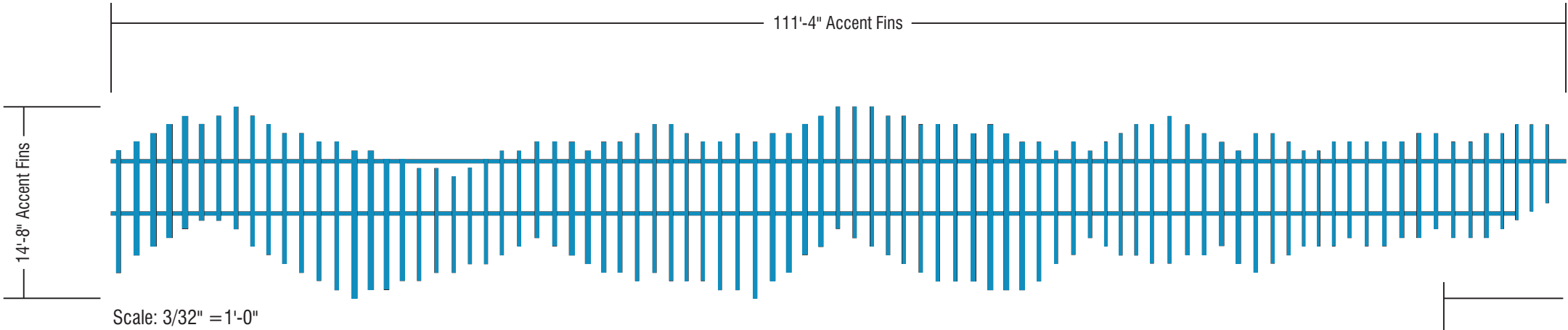
Submitted By:

CAPITAL SIGN SOLUTIONS

adwarchitects
environmentsforlife


$(14'-8" \times 111'-4" = 1,632.89 \text{ Sq Ft}) + (15'-4" \times 28'-8" = 439.56 \text{ Sq Ft}) = 2,072.45 \text{ Sq Ft PROPOSED}$

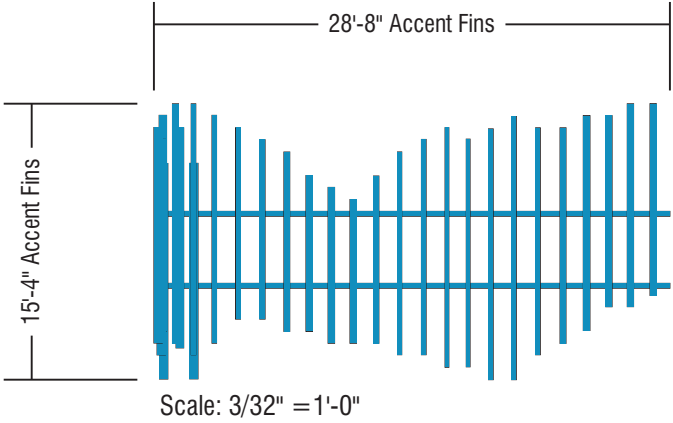
NORTH ELEVATION



Non-lighted Building Accent "Fins" constructed of aluminum and finished to match PANTONE 89-1-4 C.

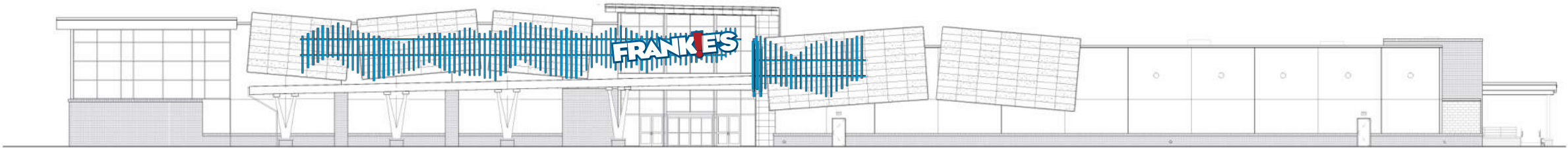
Accent "Fins" mounted to Building Fascia via aluminum sub-frame and non-corrosive fasteners. Exact Mounting Details TBD.

 Accent "Fins": painted to match PANTONE 89-1-4 C (finish TBD)



NORTH ELEVATION RENDERING

NOT TO SCALE



NORTH ELEVATION - Scale: 1/32" = 1'-0"



5800 McHines Place, Suite 110
Raleigh, NC 27616
Office 919 789-1452 | Cell 919 825-6917
www.capitalsignsolutions.com

© Copyright 2013 All designs and drawings are the sole property of Capital Sign Solutions, and may not be reproduced, published, changed or used in any way without written permission and consent. In addition, all ideas, contents of proposals, and all specifications of any project entered into with Capital Sign Solutions are all rights reserved.

Client:



Filename:

Frankies Charlotte
Exterior Signage (6)

Date:

07-27-16

Designer:

HH

Drawing No:

H-QT4678-1

Scale:

As Noted

Revision 1:

09/14/16

Revision 2:

09/29/16

Revision 3:

03/28/17

Revision 4:

04/03/17

Revision 5:

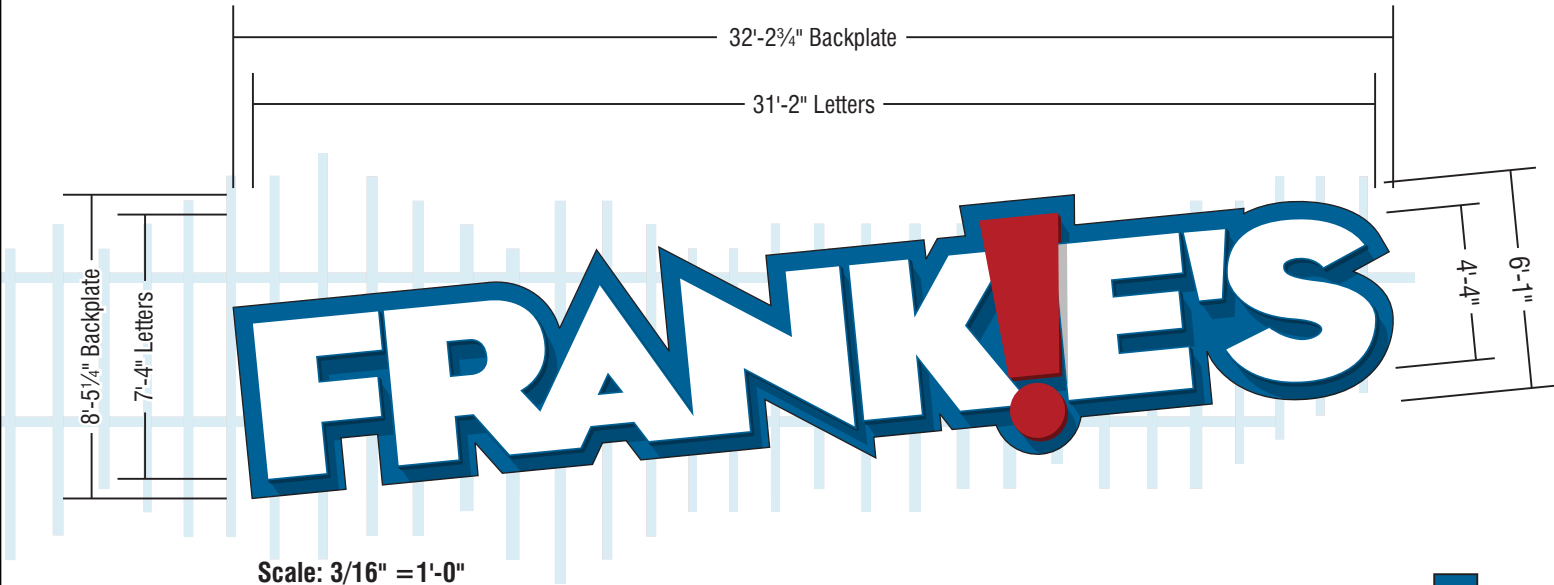
11/01/17

Revision 6:

Client Approval:

Landlord Approval:

8'-5¼" x 32'-2¾" = 271.93 Sq Ft PROPOSED
(Note that this Letter Sq Ft is contained within the Accent "Fins" Sq Ft)

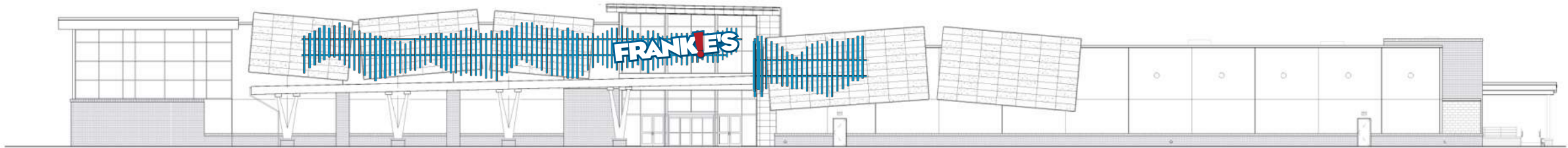
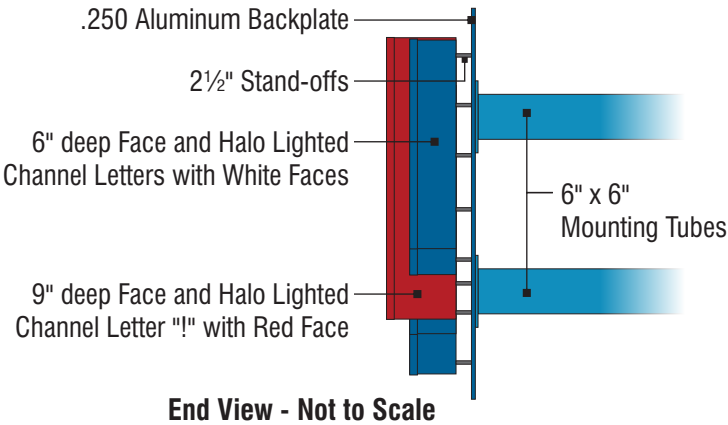


(1) Set of Face/Halo Lighted Channel Letters constructed of aluminum (6" deep & 9" deep for "!"). Letters finished to match PMS 7691 Blue. "!" finished to match PMS 7621 Red. Trimcap to match Returns. Letter faces of White Acrylic (! to have translucent Red Vinyl). Letter Backs of Clear Lexan (for Halo Illumination). Face illumination via White LEDs. Halo illumination via Blue LEDs. 120 Volts. All wiring UL approved.

Letters mounted to .250 Aluminum Backplate with 2½" stand-off spacers. Backplate mounted to curved fascia via 6" x 6" Sq Tubes with non-corrosive fasteners. Specific Mounting Details TBD.

- Letter Returns: painted to match PMS 7691 Blue (satin finish)
- Letter Trimcap: 1" Jewelite Trim to match PMS 7691 Blue
- Letter Faces: White Acrylic
- !" Returns: painted to match PMS 7621 Red (satin finish)
- !" Trimcap: 1" Jewelite Trim to match PMS 7621 Red
- !" Face: White Acrylic with 3M 3630-73 Dark Red Vinyl
- Face Illumination: White LEDs
- Halo Illumination: Blue LEDs
- Backplate: painted to match PMS 7691 Blue (satin finish)
- Mounting Tubes/Plates: painted to match PANTONE 89-1-4 C (finish TBD)

NORTH ELEVATION



NORTH ELEVATION - Scale: 1/32" = 1'-0"



5800 McHines Place, Suite 110
Raleigh, NC 27616
Office 919 789-1452 | Cell 919 825-6917
www.capitalsignsolutions.com

© Copyright 2013 All designs and drawings are the sole property of Capital Sign Solutions, and may not be reproduced, published, changed or used in any way without written permission and consent. In addition, all ideas, contents of proposals, and all specifications of any project entered into with Capital Sign Solutions are all rights reserved.

Client:



Filename:
**Frankies Charlotte
Exterior Signage (6)**

Date:
07-27-16

Designer:
HH

Drawing No:
H-QT4678-2

Scale:
As Noted

Revision 1: **09/14/16**

Revision 2: **09/29/16**

Revision 3: **03/28/17**

Revision 4: **04/03/17**

Revision 5: **09/22/17**

Revision 6: **11/01/17**

Client Approval:

Landlord Approval:

NORTH ELEVATION



CAPITAL SIGN SOLUTIONS

5800 McHines Place, Suite 110
Raleigh, NC 27616

Office 919 789-1452 | Cell 919 825-6917

www.capitalsignsolutions.com

© Copyright 2013 All designs and drawings are the sole property of Capital Sign Solutions, and may not be reproduced, published, changed or used in any way without written permission and consent. In addition, all ideas, contents of proposals, and all specifications of any project entered into with Capital Sign Solutions are all rights reserved.

Client:



Filename:

**Frankies Charlotte
Exterior Signage (6)**

Date:

11-01-17

Designer:

HH

Drawing No:

H-QT4678-3

Scale:

As Noted

Revision 1:

Revision 2:

Revision 3:

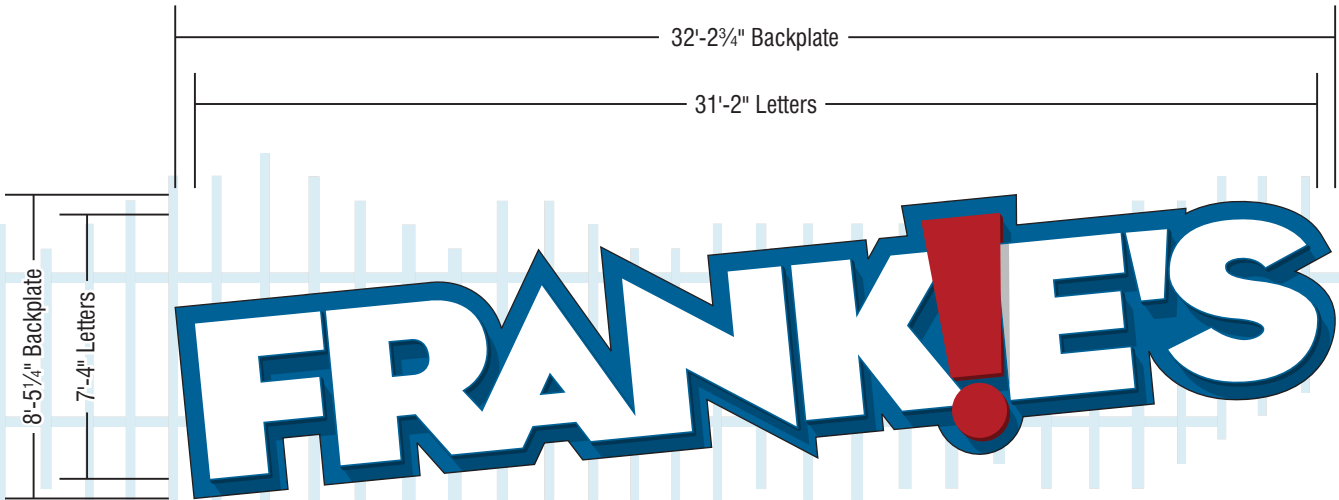
Revision 4:

Revision 5:

Revision 6:

Client Approval:

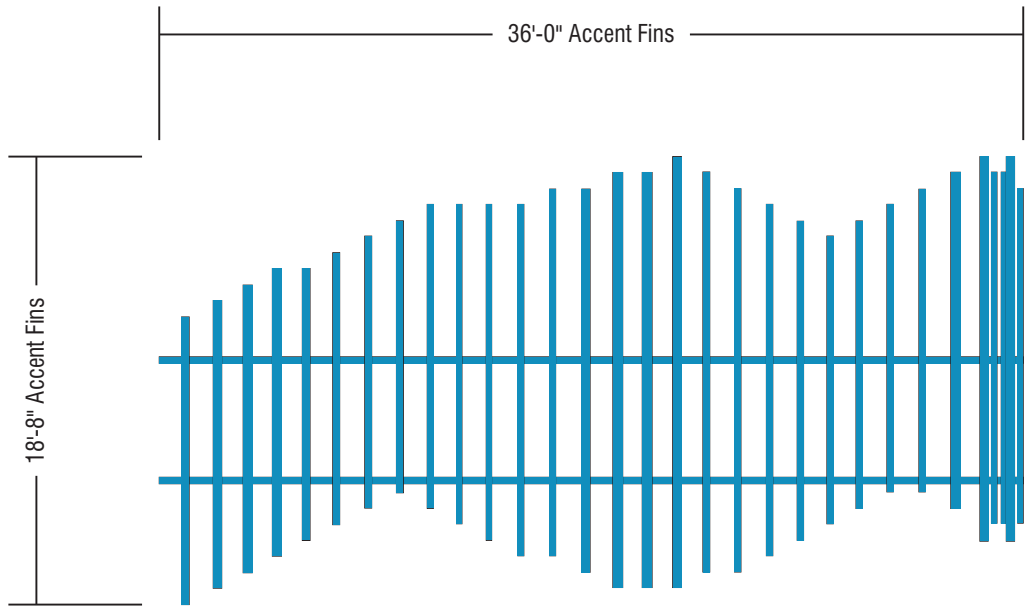
Landlord Approval:



Scale: 3/16" = 1'-0"



NIGHT-TIME VIEW

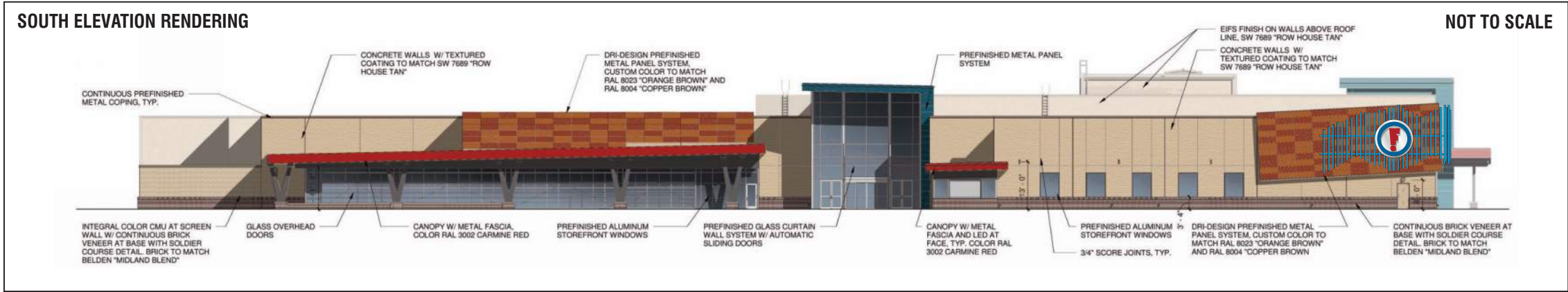


Scale: 1/8" = 1'-0"

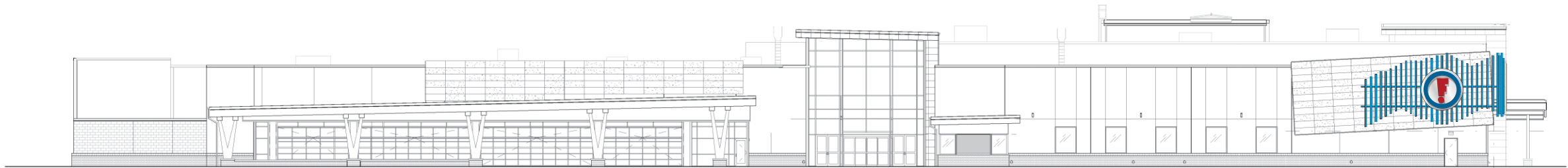
Non-lighted Building Accent "Fins" constructed of aluminum and finished to match PANTONE 89-1-4 C.

Accent "Fins" mounted to Building Fascia via aluminum sub-frame and non-corrosive fasteners. Exact Mounting Details TBD.

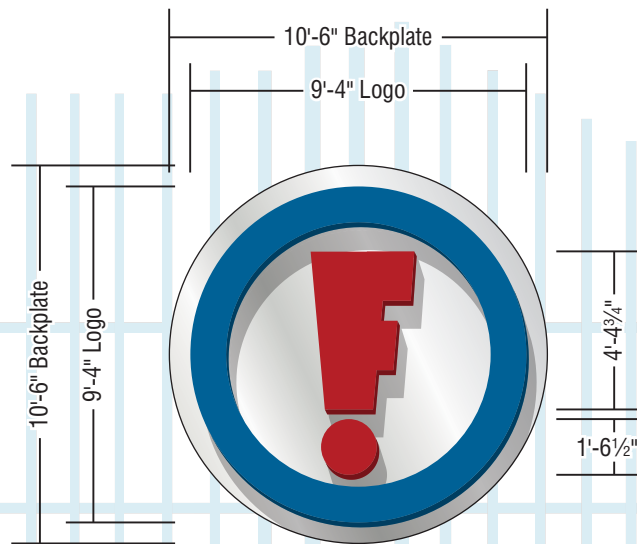
 Accent "Fins": painted to match PANTONE 89-1-4 C (finish TBD)



SOUTH ELEVATION - Scale: 1/32" = 1'-0"



10'-6" x 10'-6" = 110.25 Sq Ft PROPOSED
(Note that this Letter Sq Ft is contained within the Accent "Fins" Sq Ft)

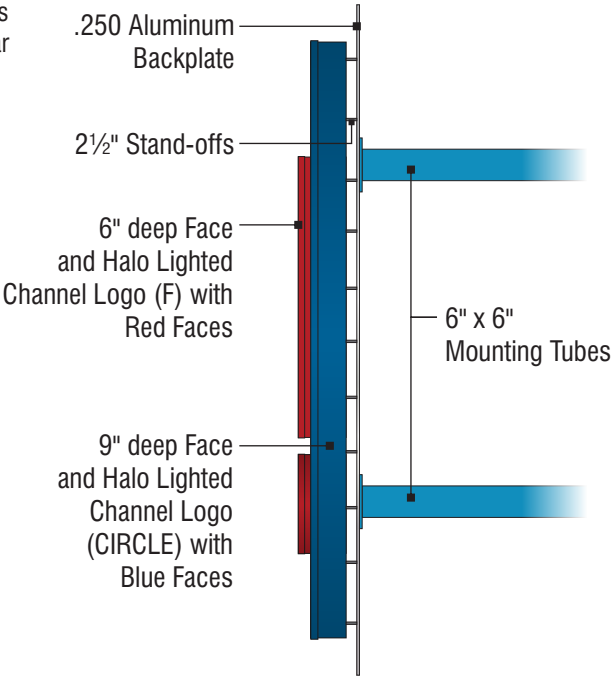


Scale: 3/16" = 1'-0"

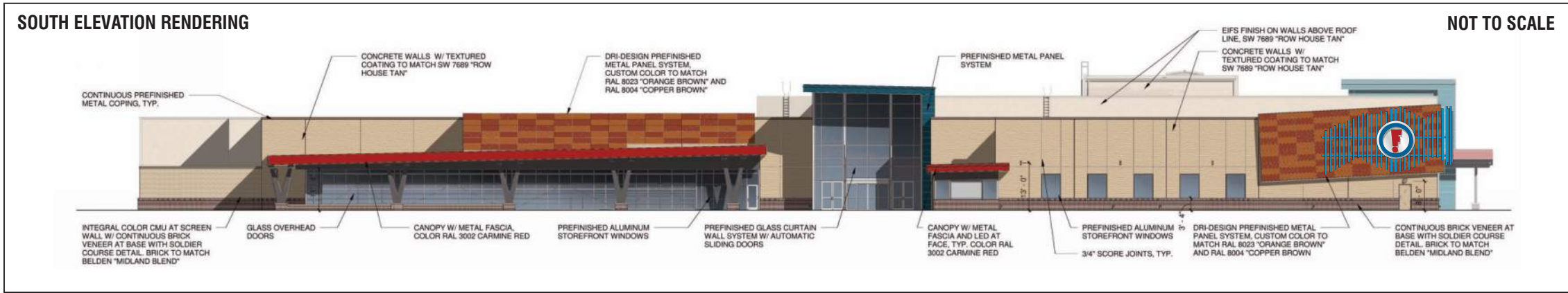
(1) Face/Halo Lighted Channel Logo constructed of aluminum (Circle 6" deep, Letter 9" deep). Circle finished to match PMS 7691 Blue. Letter finished to match PMS 7621 Red. Trimcap to match Returns. Logo Faces of White Acrylic with translucent Red & Blue Vinyls). Logo Backs of Clear Lexan (for Halo Illumination). Face & Halo illumination via White LEDs. 120 Volts. All wiring UL approved.

Logo mounted to .250 Aluminum Backplate with 2 1/2" stand-off spacers. Backplate mounted to curved fascia via 6" x 6" Sq Tubes with non-corrosive fasteners. Specific Mounting Details TBD.

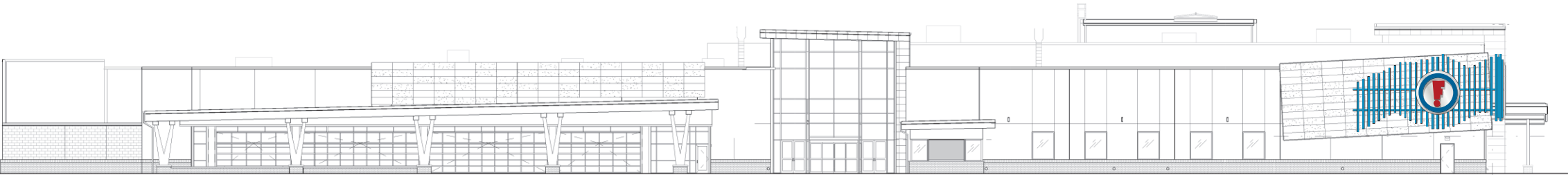
- Circle Return: painted to match PMS 7691 Blue (satin finish)
- Circle Trimcap: 1" Jewelite Trim to match PMS 7691 Blue
- Circle Face: White Acrylic with 3M 3630-147 Light European Blue Vinyl
- Letter Returns: painted to match PMS 7621 Red (satin finish)
- Letter Trimcap: 1" Jewelite Trim to match PMS 7621 Red
- Letter Faces: White Acrylic with 3M 3630-73 Dark Red Vinyl
- Face & Halo Illumination: White LEDs
- Backplate: Clear Anodized Aluminum
- Mounting Tubes/Plates: painted to match PANTONE 89-1-4 C (finish TBD)



End View - Not to Scale



SOUTH ELEVATION - Scale: 1/32" = 1'-0"



SOUTH ELEVATION



5800 McHines Place, Suite 110
Raleigh, NC 27616
Office 919 789-1452 | Cell 919 825-6917
www.capitalsignsolutions.com

© Copyright 2013 All designs and drawings are the sole property of Capital Sign Solutions, and may not be reproduced, published, changed or used in any way without written permission and consent. In addition, all ideas, contents of proposals, and all specifications of any project entered into with Capital Sign Solutions are all rights reserved.



Filename:
Frankies Charlotte
Exterior Signage (6)

Date:
07-27-16

Designer:
HH

Drawing No:
H-QT4678-5

Scale:
As Noted

- Revision 1: 09/14/16
- Revision 2: 03/28/17
- Revision 3: 04/03/17
- Revision 4: 09/22/17
- Revision 5: 11/01/17
- Revision 6:

Client Approval:

Landlord Approval:

SOUTH ELEVATION



CAPITAL SIGN SOLUTIONS

5800 McHines Place, Suite 110
Raleigh, NC 27616

Office 919 789-1452 | Cell 919 825-6917

www.capitalsignsolutions.com

© Copyright 2013 All designs and drawings are the sole property of Capital Sign Solutions, and may not be reproduced, published, changed or used in any way without written permission and consent. In addition, all ideas, contents of proposals, and all specifications of any project entered into with Capital Sign Solutions are all rights reserved.

Client:



Filename:

**Frankies Charlotte
Exterior Signage (6)**

Date:

11-01-17

Designer:

HH

Drawing No:

H-QT4678-6

Scale:

As Noted

Revision 1:

Revision 2:

Revision 3:

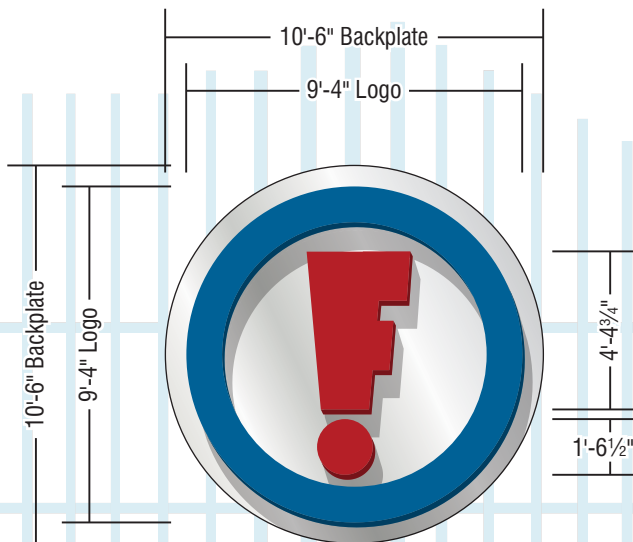
Revision 4:

Revision 5:

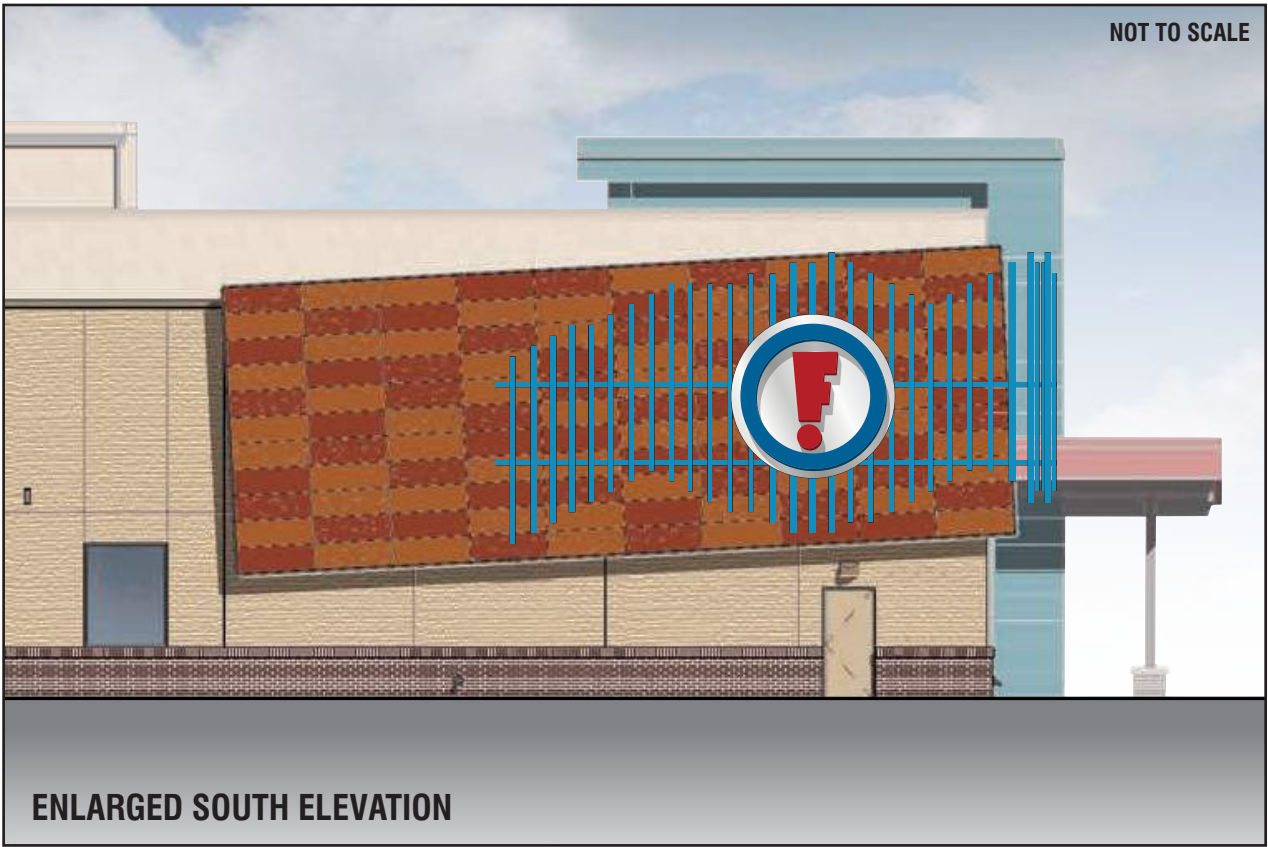
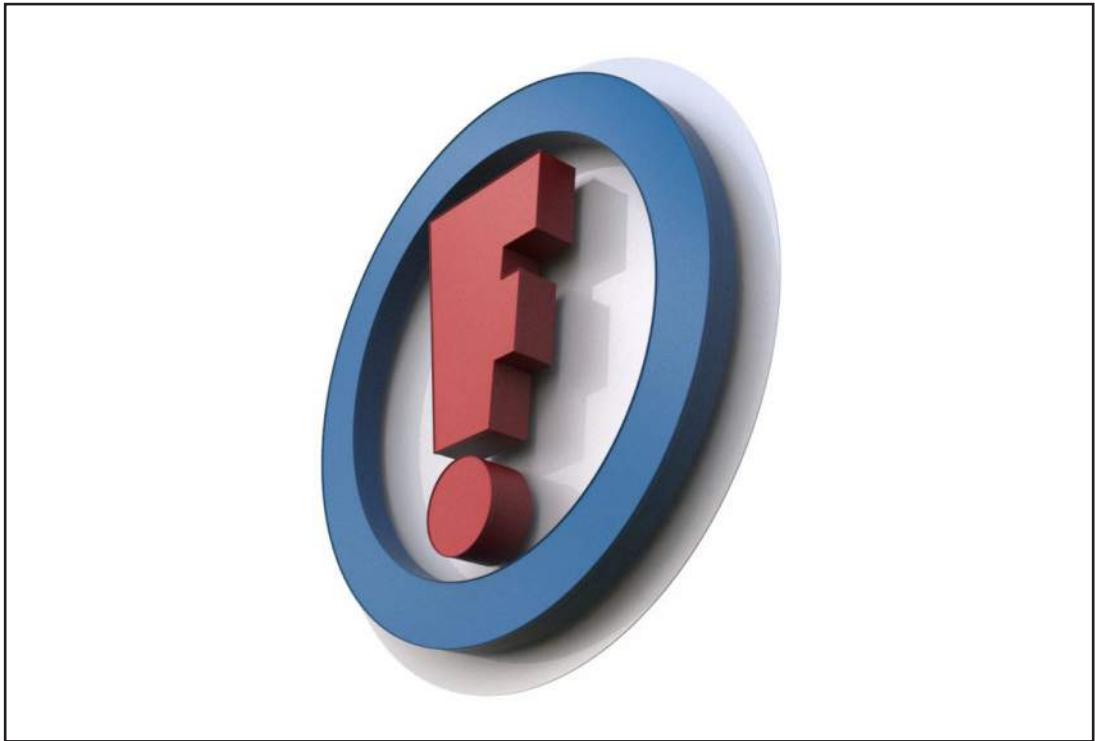
Revision 6:

Client Approval:

Landlord Approval:

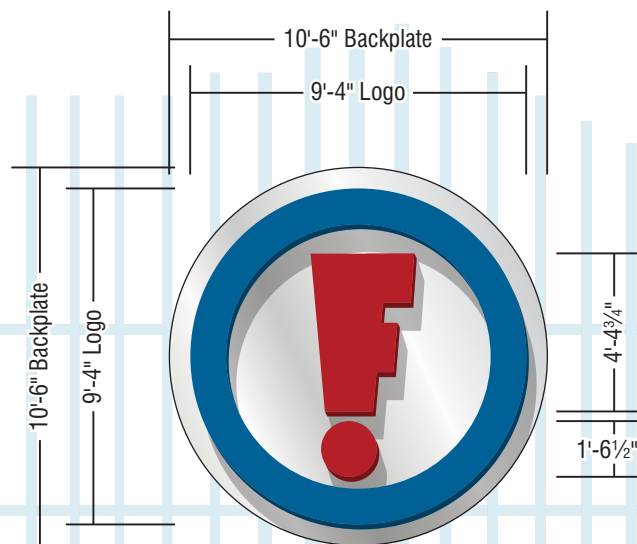


Scale: 3/16" = 1'-0"

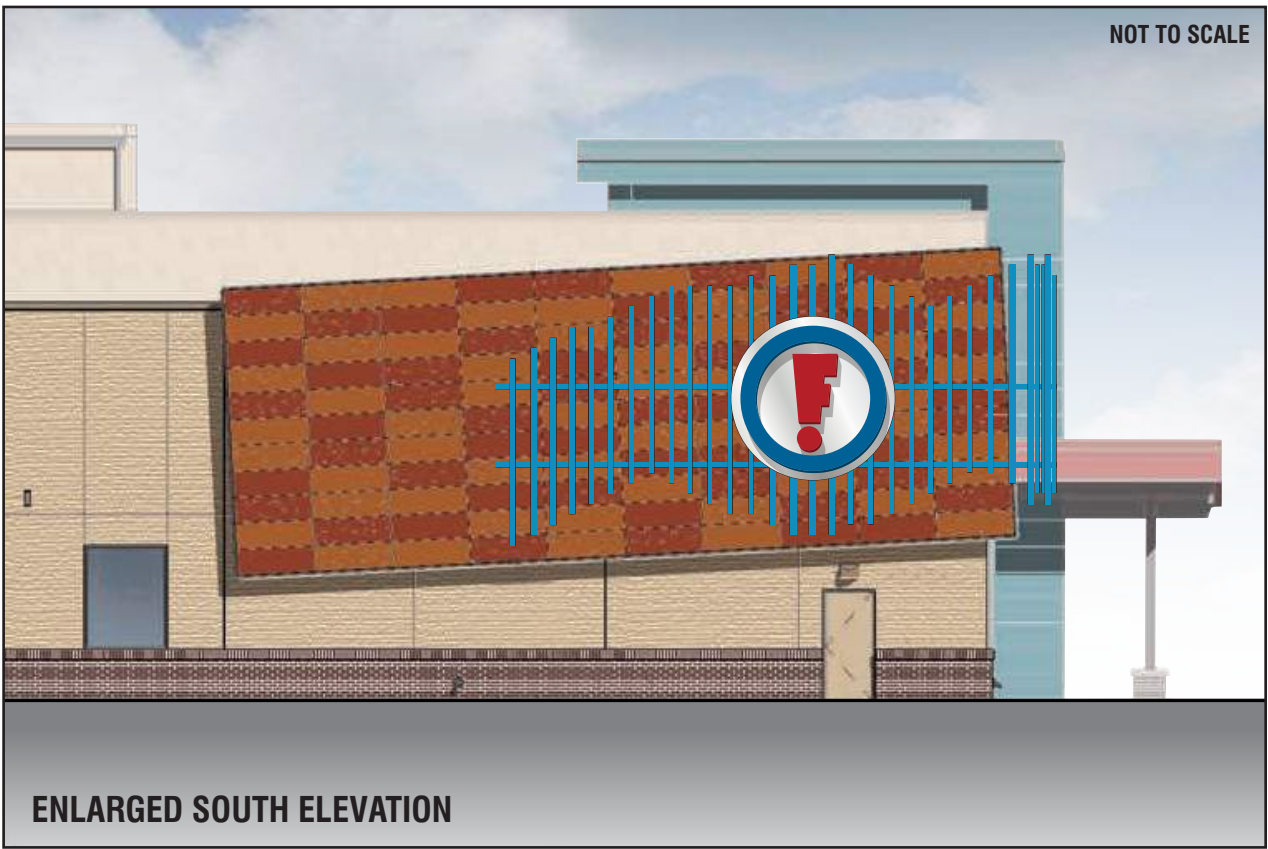


ALTERNATE OPTION SHOWN WITH BLUE & RED HALO

SOUTH ELEVATION



Scale: 3/16" = 1'-0"



5800 McHines Place, Suite 110
Raleigh, NC 27616
Office 919 789-1452 | Cell 919 825-6917
www.capitalsignsolutions.com

© Copyright 2013 All designs and drawings are the sole property of Capital Sign Solutions, and may not be reproduced, published, changed or used in any way without written permission and consent. In addition, all ideas, contents of proposals, and all specifications of any project entered into with Capital Sign Solutions are all rights reserved.

Client:



Filename:

Frankies Charlotte
Exterior Signage (6)

Date:

11-01-17

Designer:

HH

Drawing No:

H-QT4678-7

Scale:

As Noted

Revision 1:

Revision 2:

Revision 3:

Revision 4:

Revision 5:

Revision 6:

Client Approval:

Landlord Approval:

COLOR OPTIONS

SOUTH ELEVATION



5800 McHines Place, Suite 110
Raleigh, NC 27616
Office 919 789-1452 | Cell 919 825-6917
www.capitalsignsolutions.com

© Copyright 2013 All designs and drawings are the sole property of Capital Sign Solutions, and may not be reproduced, published, changed or used in any way without written permission and consent. In addition, all ideas, contents of proposals, and all specifications of any project entered into with Capital Sign Solutions are all rights reserved.

Client:



Filename:

**Frankies Charlotte
Exterior Signage (6)**

Date:

11-01-17

Designer:

HH

Drawing No:

H-QT4678-8

Scale:

Not to Scale

Revision 1:

Revision 2:

Revision 3:

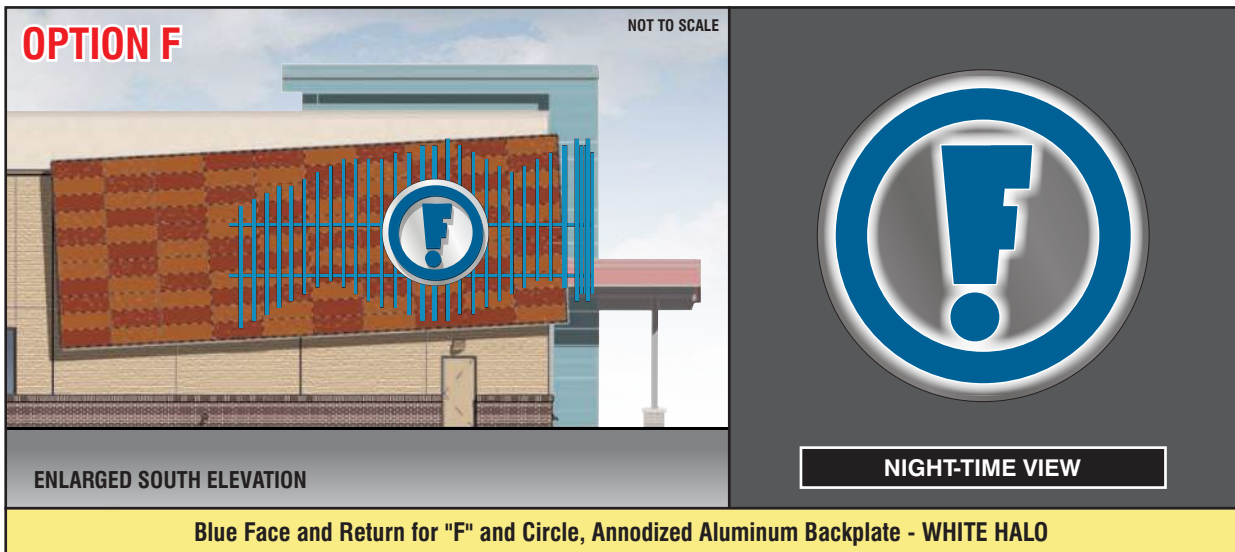
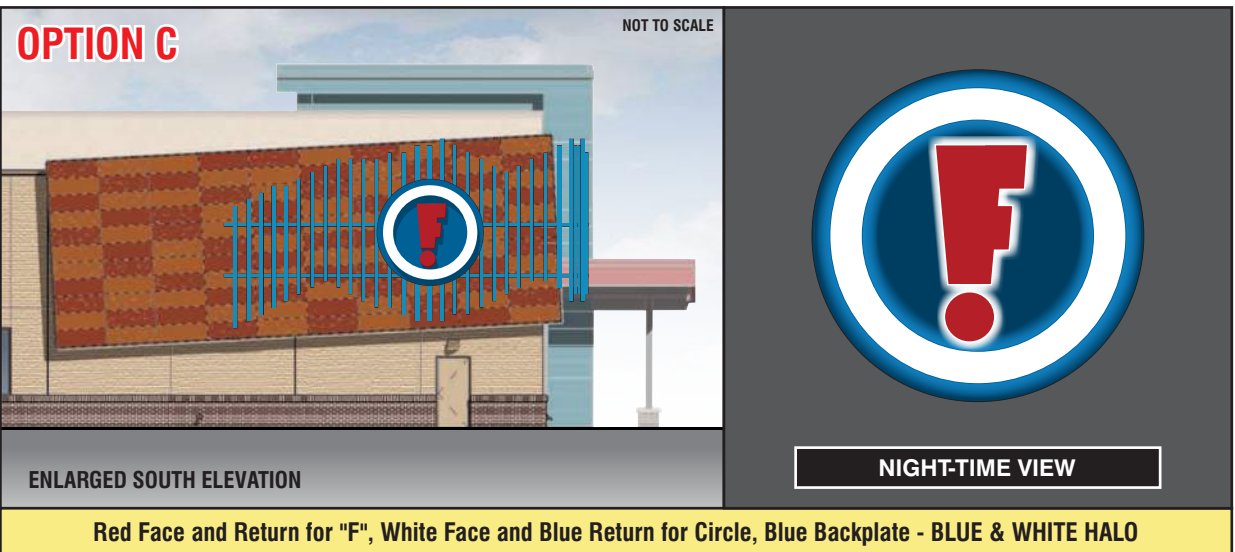
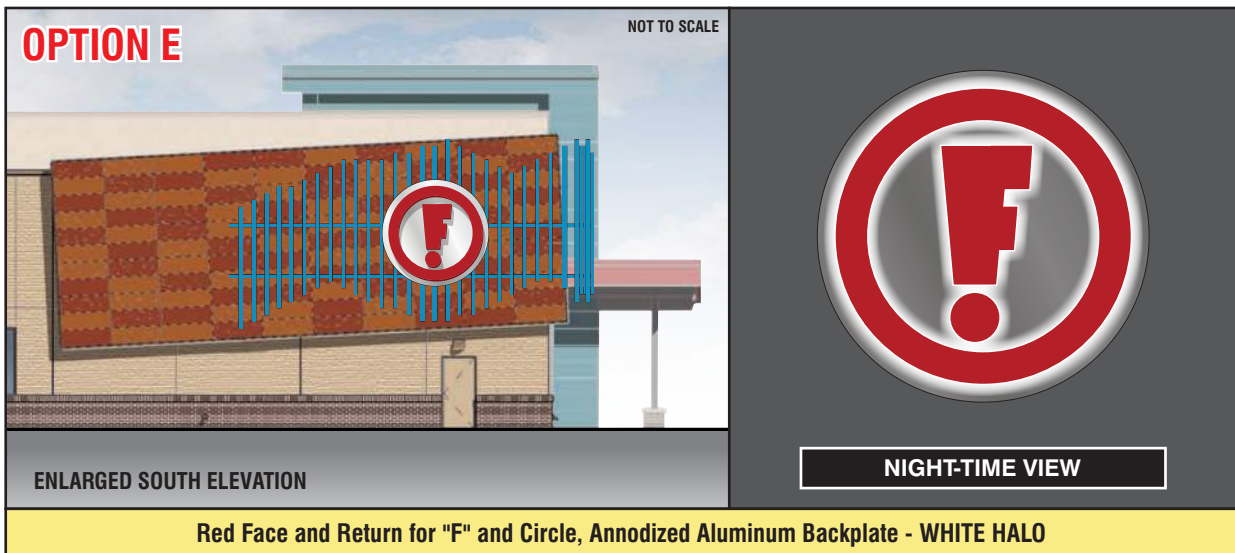
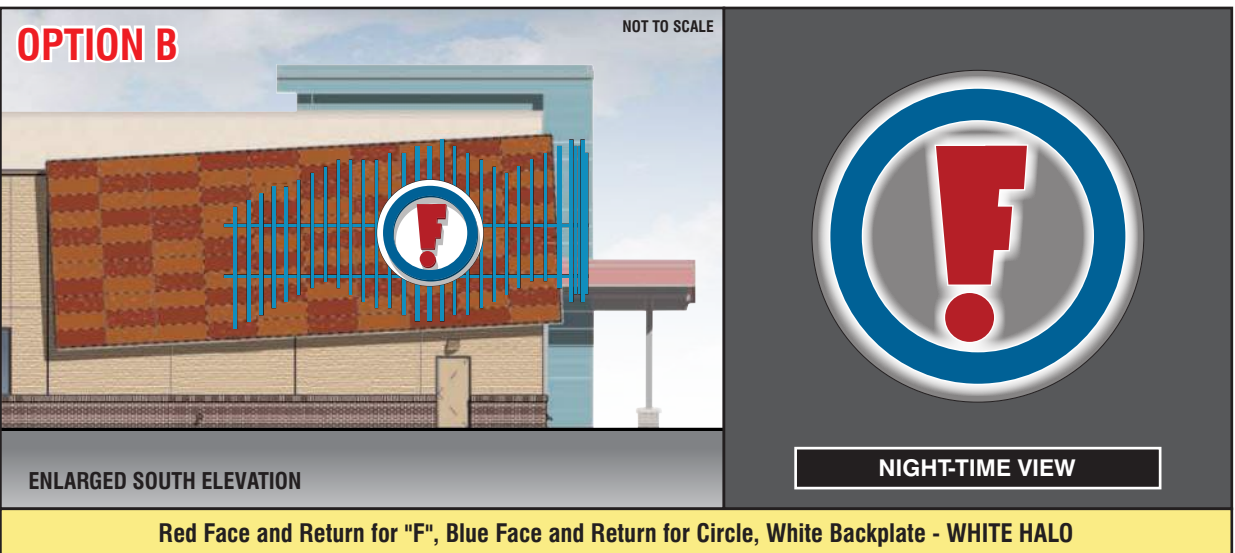
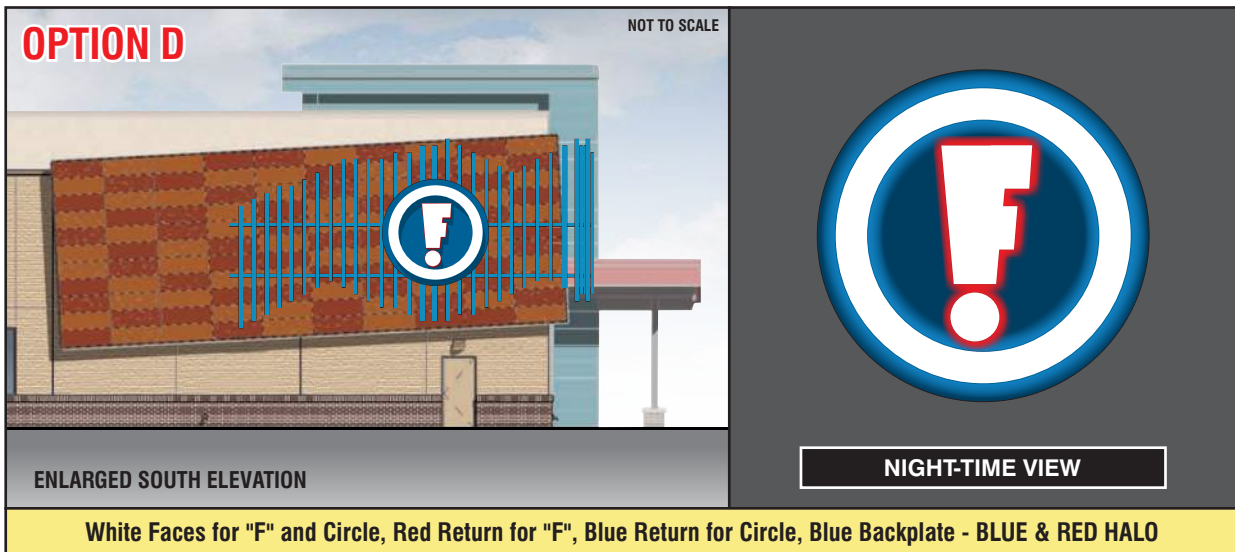
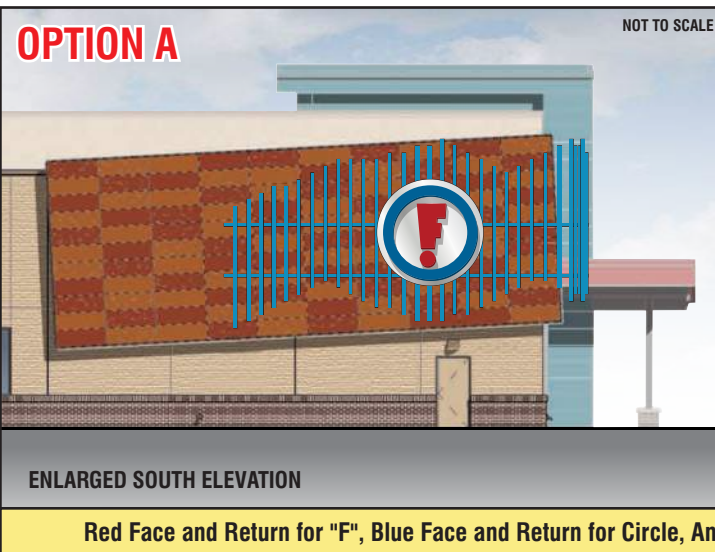
Revision 4:

Revision 5:

Revision 6:

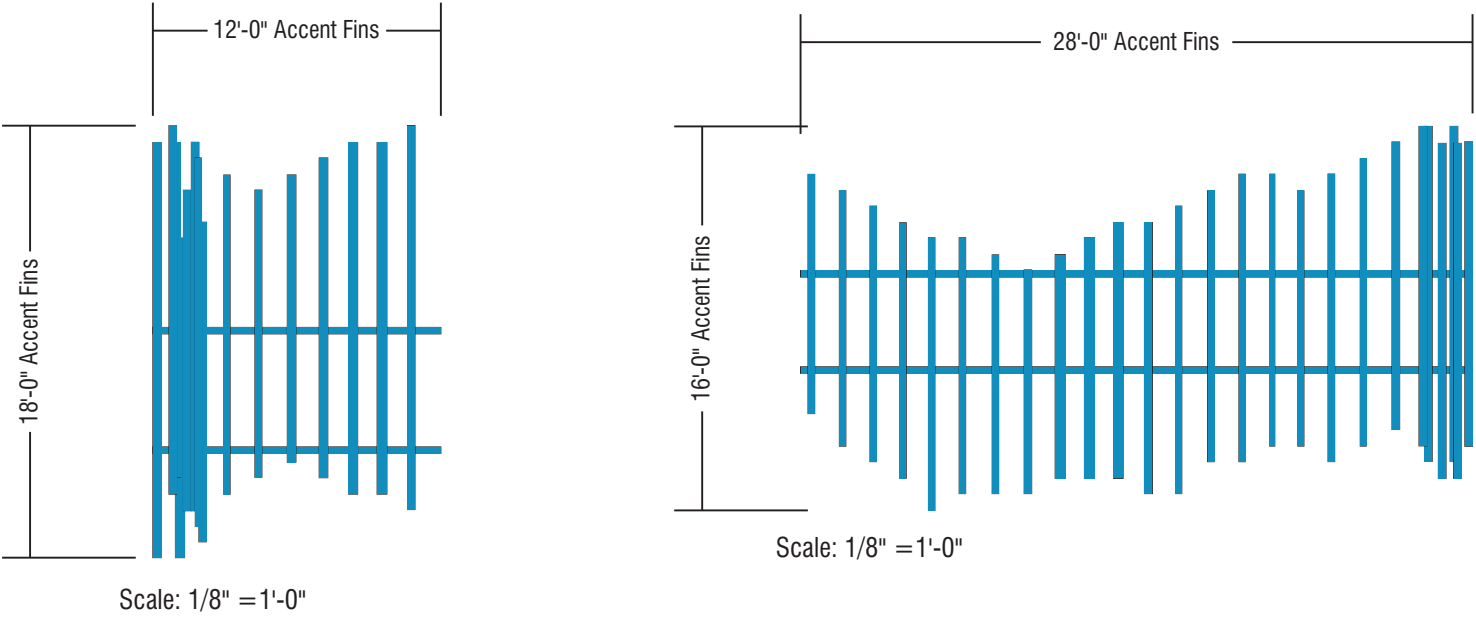
Client Approval:

Landlord Approval:



(18'-0" x 12'-0" = 216.0 Sq Ft) + (16'-0" x 28'-0" = 448.0 Sq Ft) = **664.0 Sq Ft PROPOSED**

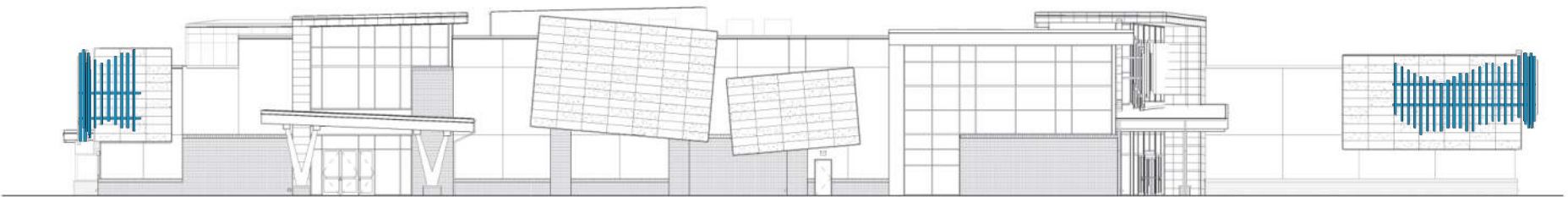
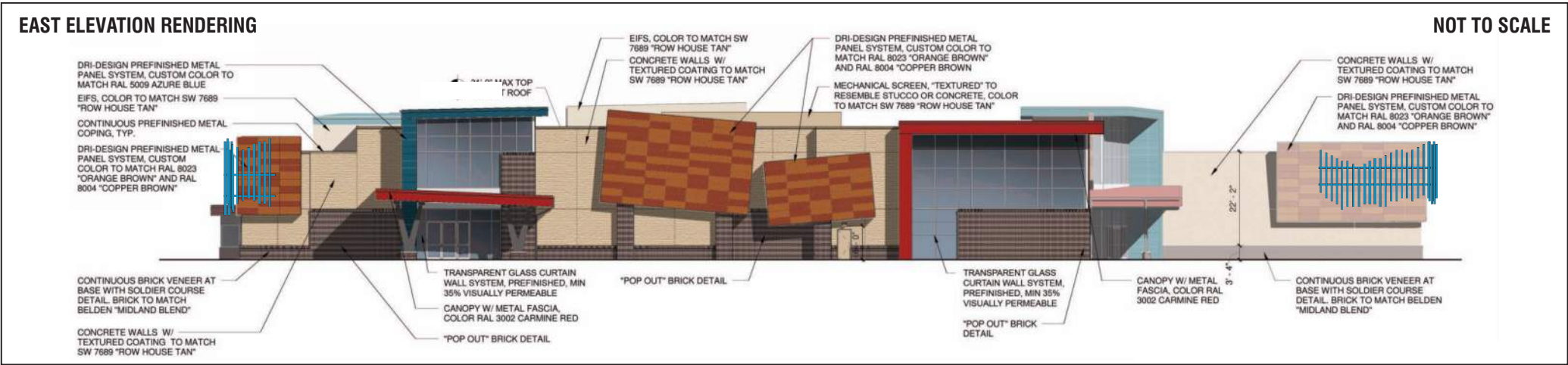
EAST ELEVATION



Non-lighted Building Accent "Fins" constructed of aluminum and finished to match PANTONE 89-1-4 C.

Accent "Fins" mounted to Building Fascia via aluminum sub-frame and non-corrosive fasteners. Exact Mounting Details TBD.

 Accent "Fins": painted to match PANTONE 89-1-4 C (finish TBD)



EAST ELEVATION - Scale: 1/32" = 1'-0"



5800 McHines Place, Suite 110
Raleigh, NC 27616

Office 919 789-1452 | Cell 919 825-6917

www.capitalsignsolutions.com

© Copyright 2013 All designs and drawings are the sole property of Capital Sign Solutions, and may not be reproduced, published, changed or used in any way without written permission and consent. In addition, all ideas, contents of proposals, and all specifications of any project entered into with Capital Sign Solutions are all rights reserved.

Client:



Filename:

Frankies Charlotte
Exterior Signage (6)

Date:

07-27-16

Designer:

HH

Drawing No:

H-QT4678-9

Scale:

As Noted

Revision 1:

09/14/16

Revision 2:

09/29/16

Revision 3:

03/28/17

Revision 4:

04/03/17

Revision 5:

Revision 6:

Client Approval:

Landlord Approval:

“FINS” SUB-FRAME & SUPPORTS FOR LETTERS



CAPITAL SIGN SOLUTIONS

5800 McHines Place, Suite 110
Raleigh, NC 27616

Office 919 789-1452 | Cell 919 825-6917

www.capitalsignsolutions.com

© Copyright 2013 All designs and drawings are the sole property of Capital Sign Solutions, and may not be reproduced, published, changed or used in any way without written permission and consent. In addition, all ideas, contents of proposals, and all specifications of any project entered into with Capital Sign Solutions are all rights reserved.

Client:



Filename:

**Frankies Charlotte
Exterior Signage (6)**

Date:

09-14-16

Designer:

HH

Drawing No:

H-QT4678-10

Scale:

Not to Scale

Revision 1:

Revision 2:

Revision 3:

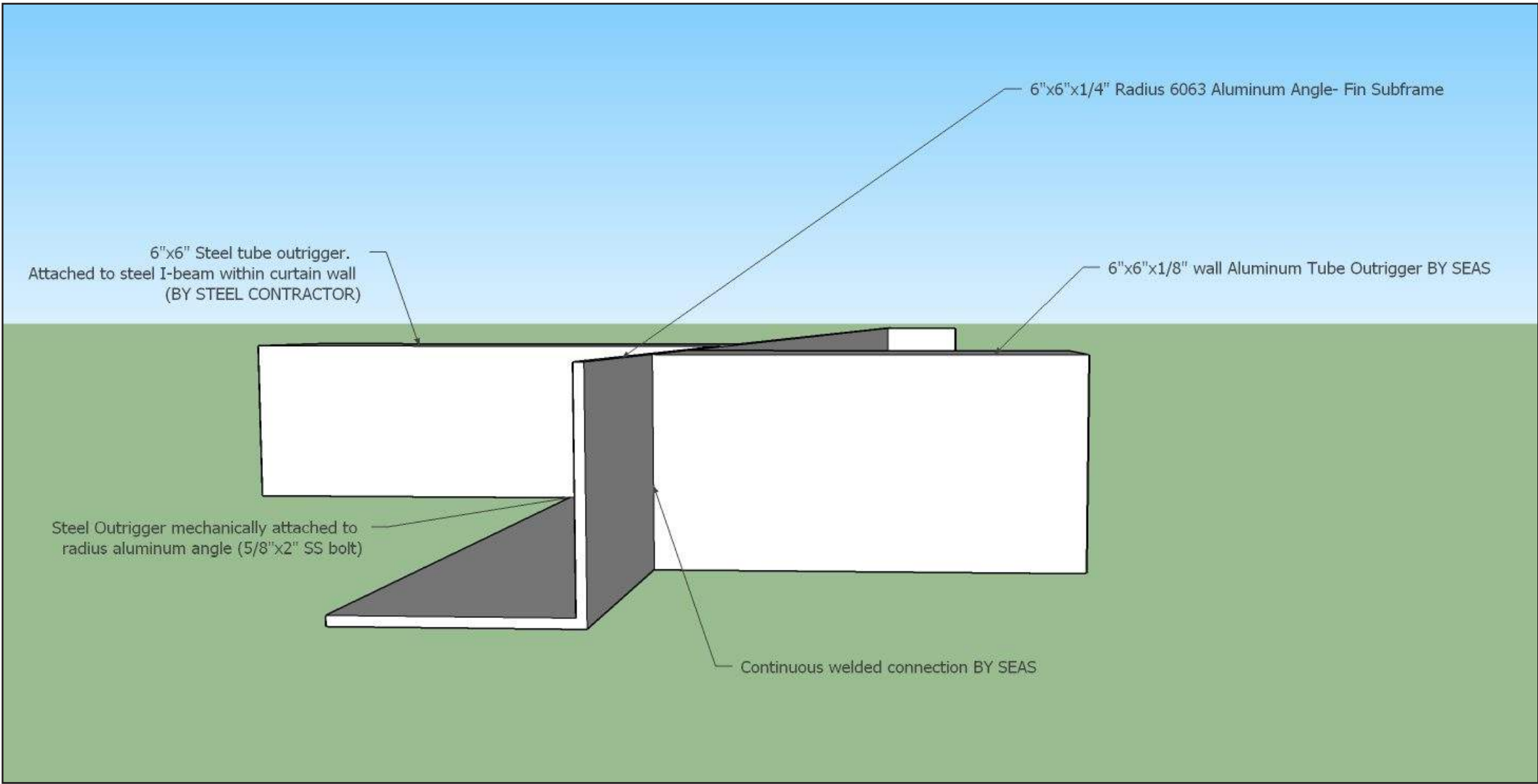
Revision 4:

Revision 5:

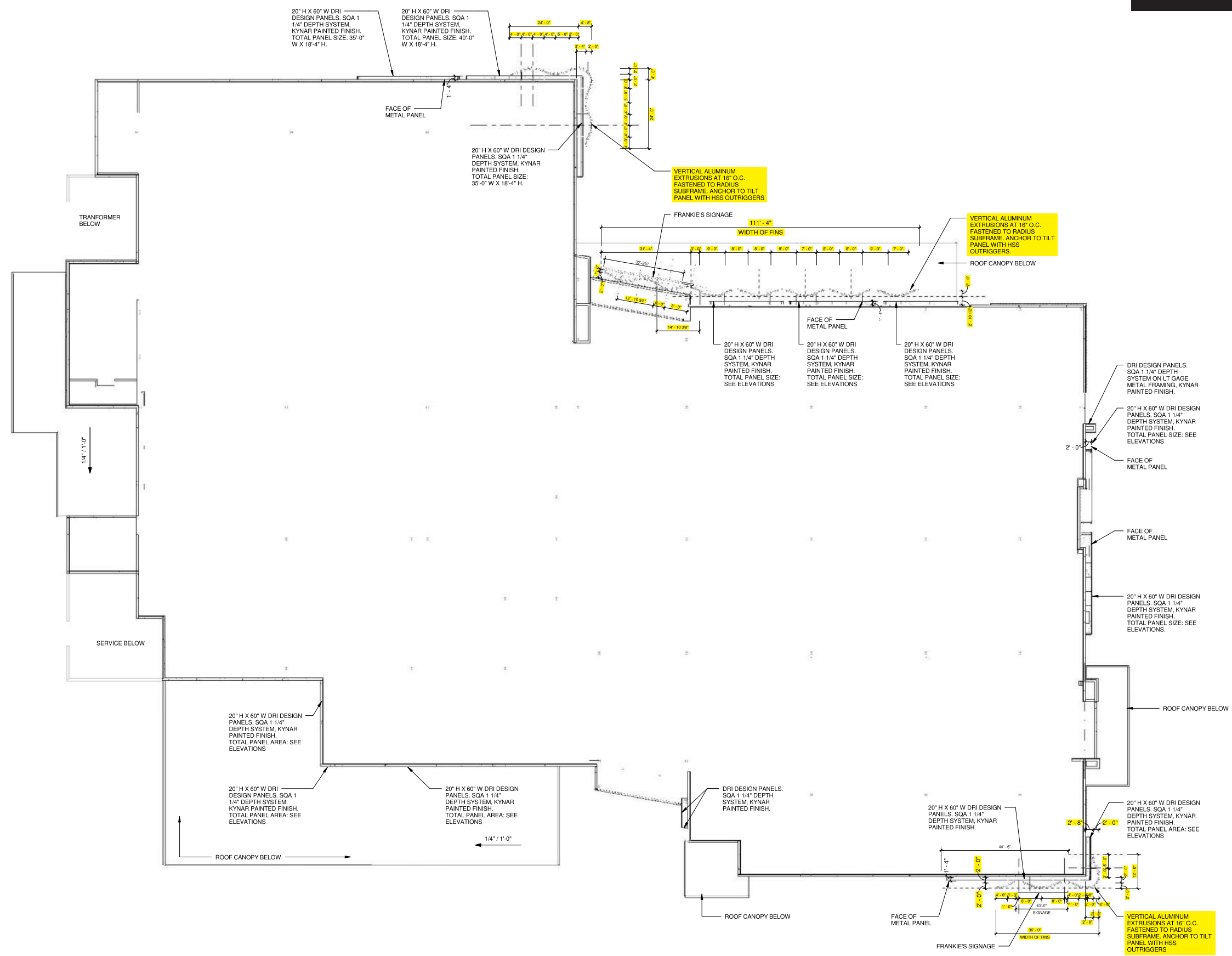
Revision 6:

Client Approval:

Landlord Approval:



“FINS” SITE PLAN



5800 McHines Place, Suite 110
Raleigh, NC 27616

Office 919 789-1452 | Cell 919 825-6917

www.capitalsignsolutions.com

© Copyright 2013 All designs and drawings are the sole property of Capital Sign Solutions, and may not be reproduced, published, changed or used in any way without written permission and consent. In addition, all ideas, contents of proposals, and all specifications of any project entered into with Capital Sign Solutions are all rights reserved.

Client:



Filename:

Frankies Charlotte
Exterior Signage (6)

Date:

09-14-16

Designer:

HH

Drawing No:

H-QT4678-11

Scale:

Not to Scale

Revision 1:

04/03/17

Revision 2:

11/01/17

Revision 3:

Revision 4:

Revision 5:

Revision 6:

Client Approval:

Landlord Approval:

SITE PLAN



CAPITAL SIGN SOLUTIONS

5800 McHines Place, Suite 110
Raleigh, NC 27616

Office 919 789-1452 | Cell 919 825-6917

www.capitalsignsolutions.com

© Copyright 2013 All designs and drawings are the sole property of Capital Sign Solutions, and may not be reproduced, published, changed or used in any way without written permission and consent. In addition, all ideas, contents of proposals, and all specifications of any project entered into with Capital Sign Solutions are all rights reserved.

Client:



Filename:

**Frankies Charlotte
Exterior Signage (6)**

Date:

07-27-16

Designer:

HH

Drawing No:

H-QT4678-12

Scale:

Not to Scale

Revision 1:

09/14/16

Revision 2:

09/29/16

Revision 3:

03/28/17

Revision 4:

04/03/17

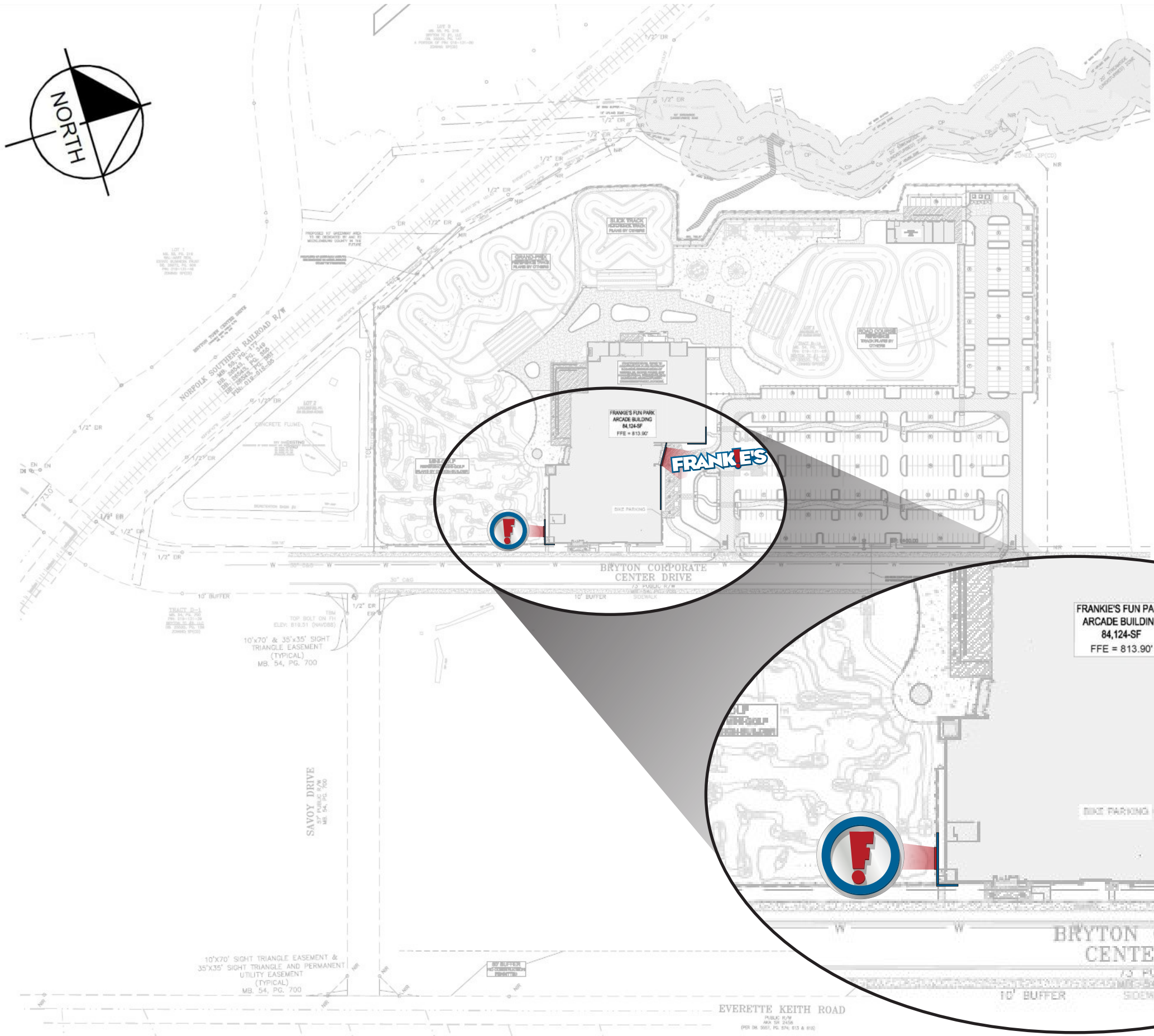
Revision 5:

11/01/17

Revision 6:

Client Approval:

Landlord Approval:



SITE PLAN LEGEND

- Architectural "Fins"
- Lighted Channel Letters