

FRANKIE'S

CHARLOTTE, NORTH CAROLINA

EXTERIOR SIGNAGE SUBMITTAL

Submitted: July 28, 2016
Revised: September 22, 2017



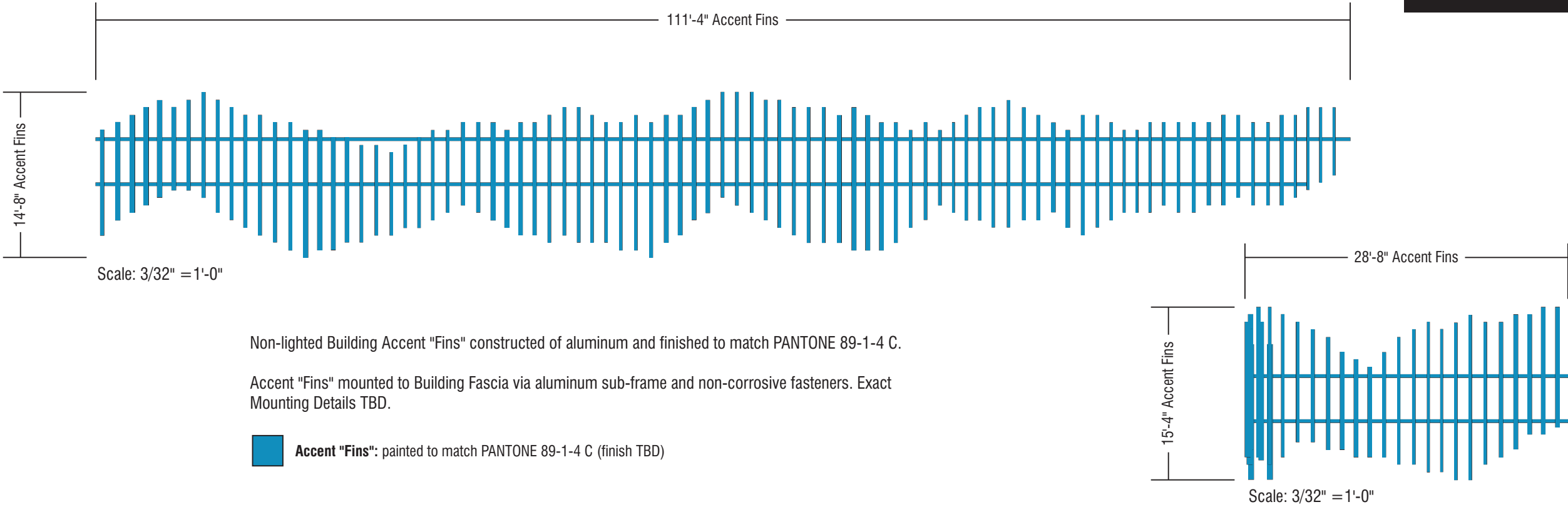
Submitted By:

CAPITAL SIGN SOLUTIONS

adwarchitects
environmentsforlife

$(14'-8" \times 111'-4" = 1,632.89 \text{ Sq Ft}) + (15'-4" \times 28'-8" = 439.56 \text{ Sq Ft}) = 2,072.45 \text{ Sq Ft PROPOSED}$

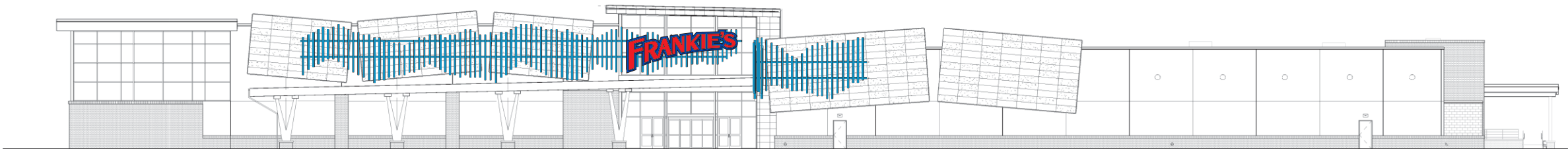
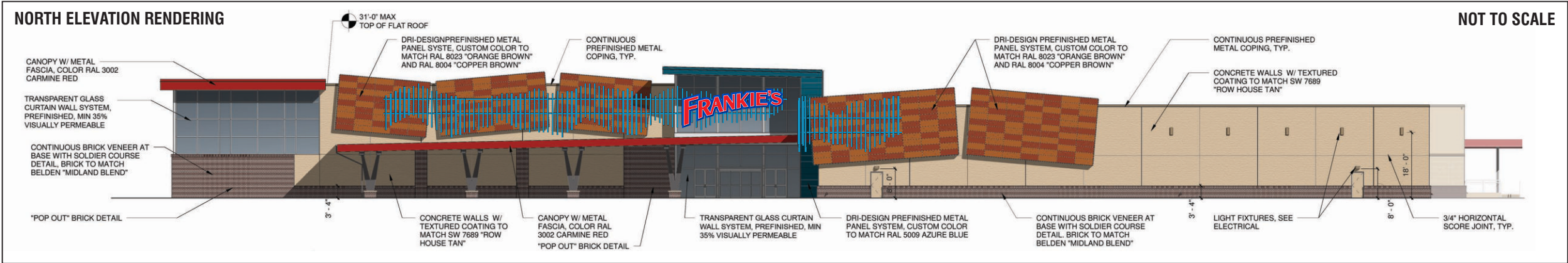
NORTH ELEVATION



Non-lighted Building Accent "Fins" constructed of aluminum and finished to match PANTONE 89-1-4 C.

Accent "Fins" mounted to Building Fascia via aluminum sub-frame and non-corrosive fasteners. Exact Mounting Details TBD.

Accent "Fins": painted to match PANTONE 89-1-4 C (finish TBD)



NORTH ELEVATION - Scale: 1/32" = 1'-0"



5800 McHines Place, Suite 110
Raleigh, NC 27616
Office 919 789-1452 | Cell 919 825-6917
www.capitalsignsolutions.com

© Copyright 2013 All designs and drawings are the sole property of Capital Sign Solutions, and may not be reproduced, published, changed or used in any way without written permission and consent. In addition, all ideas, contents of proposals, and all specifications of any project entered into with Capital Sign Solutions are all rights reserved.

Client:
FRANKIE'S

Filename:
**Frankies Charlotte
Exterior Signage (5)**

Date:
07-27-16

Designer:
HH

Drawing No:
H-QT4678-1

Scale:
As Noted

Revision 1: **09/14/16**

Revision 2: **09/29/16**

Revision 3: **03/28/17**

Revision 4: **04/03/17**

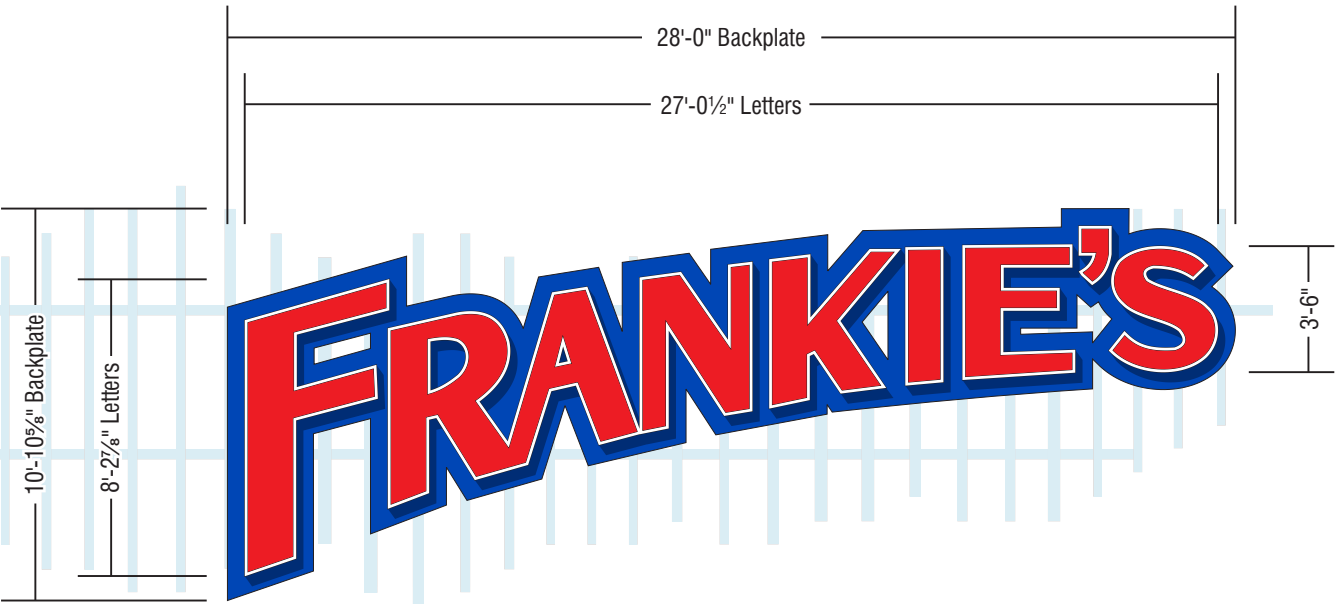
Revision 5:

Revision 6:

Client Approval:

Landlord Approval:

10'-10 5/8" x 28'-0" = 304.79 Sq Ft PROPOSED
(Note that this Letter Sq Ft is contained within the Accent "Fins" Sq Ft)

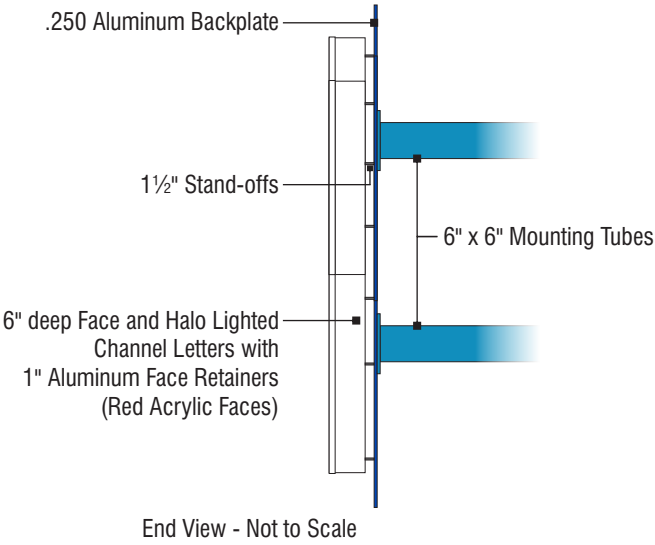


Scale: 3/16" = 1'-0"

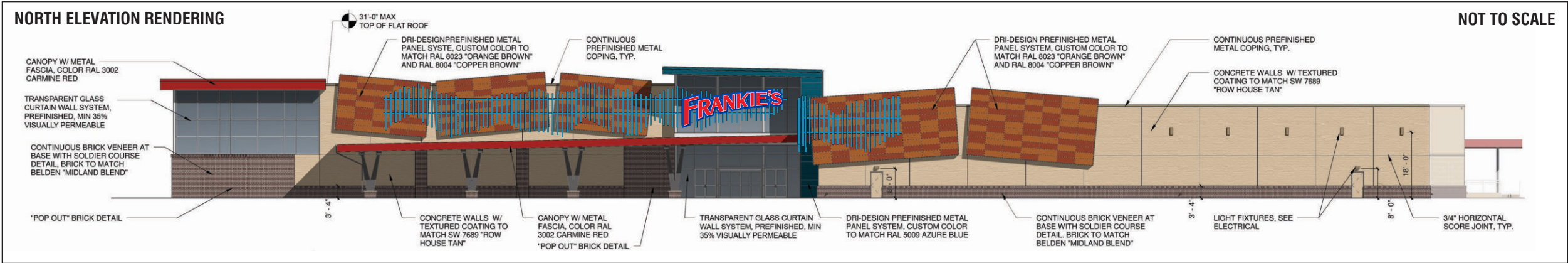
(1) Set of Face/Halo Lighted Channel Letters constructed of aluminum (6" deep). Letters finished in White. Letter faces of Red Acrylic. Faces held in place via 1" aluminum face retainers, finish in White. Letter Backs of Clear Lexan (for Halo Illumination). Face and Halo illumination via White LEDs. 120 Volts. All wiring UL approved.

Letters mounted to .250 Aluminum Backplate. Backplate with 1 1/2" stand-off spacers. Backplate mounted to curved fascia via 6" x 6" Sq Tubes with non-corrosive fasteners. Specific Mounting Details TBD.

- Letter Returns: painted White (gloss finish)
- Letter Retainers: painted White (gloss finish)
- Letter Faces: Red Acrylic to match PANTONE 185 Red
- Face & Halo Illumination: White LEDs
- Backplate: painted to match PANTONE 2728 Blue (gloss finish)
- Mounting Tubes/Plates: painted to match PANTONE 89-1-4 C (finish TBD)



End View - Not to Scale



NORTH ELEVATION - Scale: 1/32" = 1'-0"

NORTH ELEVATION



CAPITAL SIGN SOLUTIONS

5800 McHines Place, Suite 110
Raleigh, NC 27616

Office 919 789-1452 | Cell 919 825-6917

www.capitalsignsolutions.com

© Copyright 2013 All designs and drawings are the sole property of Capital Sign Solutions, and may not be reproduced, published, changed or used in any way without written permission and consent. In addition, all ideas, contents of proposals, and all specifications of any project entered into with Capital Sign Solutions are all rights reserved.

Client:



Filename:

Frankies Charlotte
Exterior Signage (5)

Date:

07-27-16

Designer:

HH

Drawing No:

H-QT4678-2

Scale:

As Noted

Revision 1:

09/14/16

Revision 2:

09/29/16

Revision 3:

03/28/17

Revision 4:

04/03/17

Revision 5:

09/22/17

Revision 6:

Client Approval:

Landlord Approval:

18'-8" x 36'-0" = 672.0 Sq Ft PROPOSED

SOUTH ELEVATION



5800 McHines Place, Suite 110
Raleigh, NC 27616
Office 919 789-1452 | Cell 919 825-6917
www.capitalsignsolutions.com

© Copyright 2013 All designs and drawings are the sole property of Capital Sign Solutions, and may not be reproduced, published, changed or used in any way without written permission and consent. In addition, all ideas, contents of proposals, and all specifications of any project entered into with Capital Sign Solutions are all rights reserved.



Filename:
**Frankies Charlotte
Exterior Signage (5)**

Date:
07-27-16

Designer:
HH

Drawing No:
H-QT4678-3

Scale:
As Noted

Revision 1: **09/14/16**

Revision 2: **03/28/17**

Revision 3: **04/03/17**

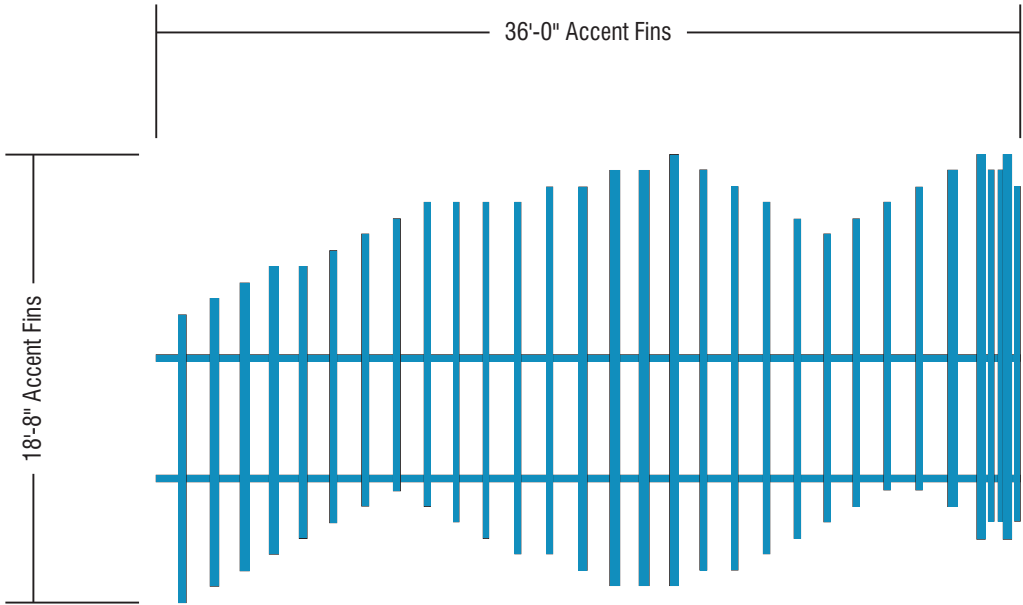
Revision 4:

Revision 5:

Revision 6:

Client Approval:

Landlord Approval:

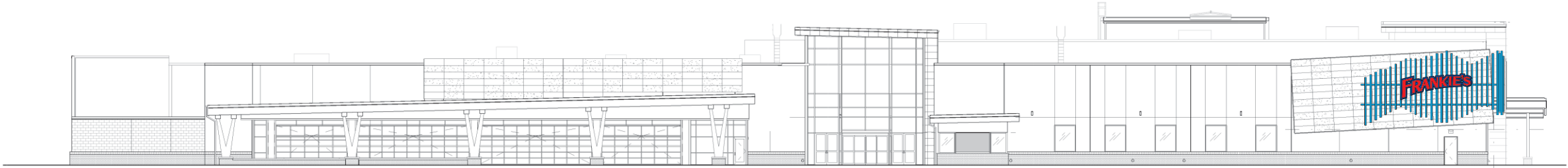
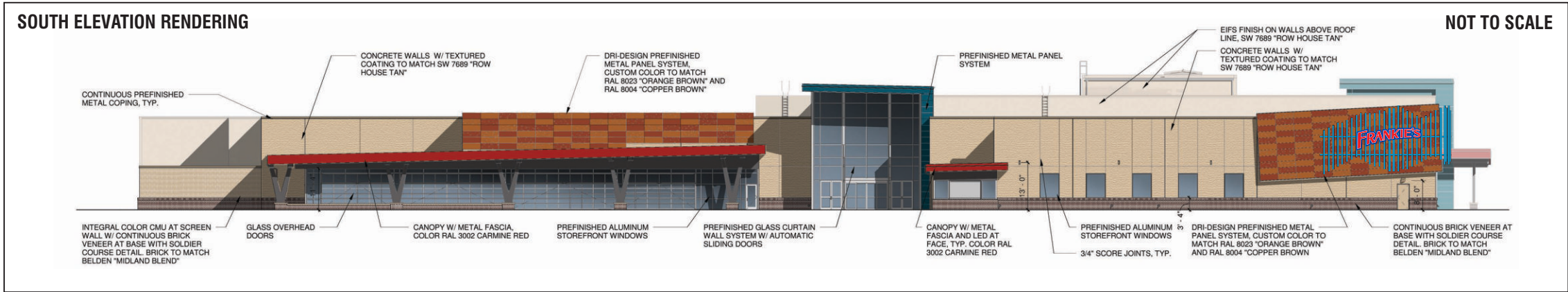


Scale: 1/8" = 1'-0"

Non-lighted Building Accent "Fins" constructed of aluminum and finished to match PANTONE 89-1-4 C.

Accent "Fins" mounted to Building Fascia via aluminum sub-frame and non-corrosive fasteners. Exact Mounting Details TBD.

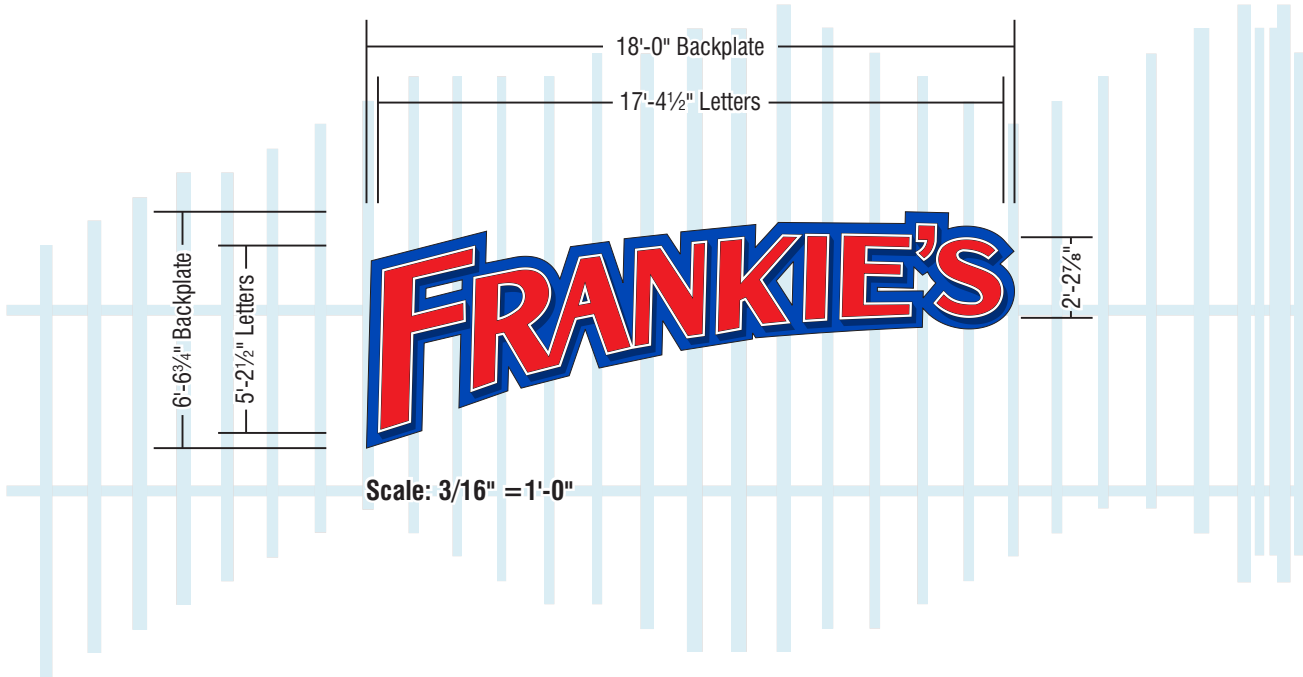
 Accent "Fins": painted to match PANTONE 89-1-4 C (finish TBD)



SOUTH ELEVATION - Scale: 1/32" = 1'-0"

6'-6¾" x 18'-0" = 118.13 Sq Ft PROPOSED
(Note that this Letter Sq Ft is contained within the Accent "Fins" Sq Ft)

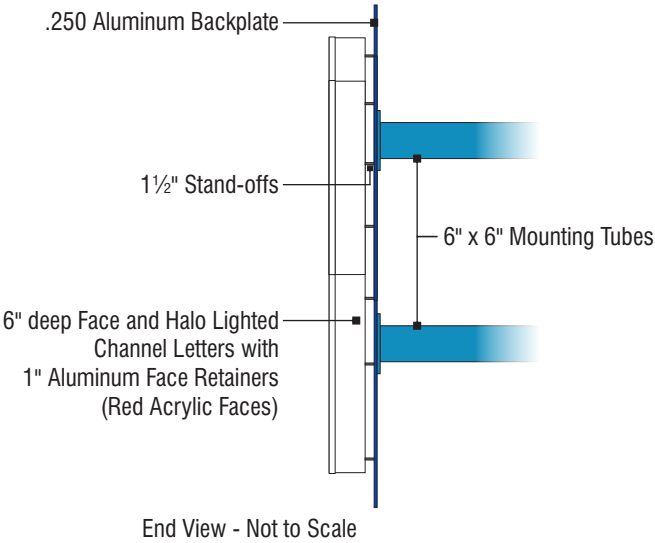
SOUTH ELEVATION



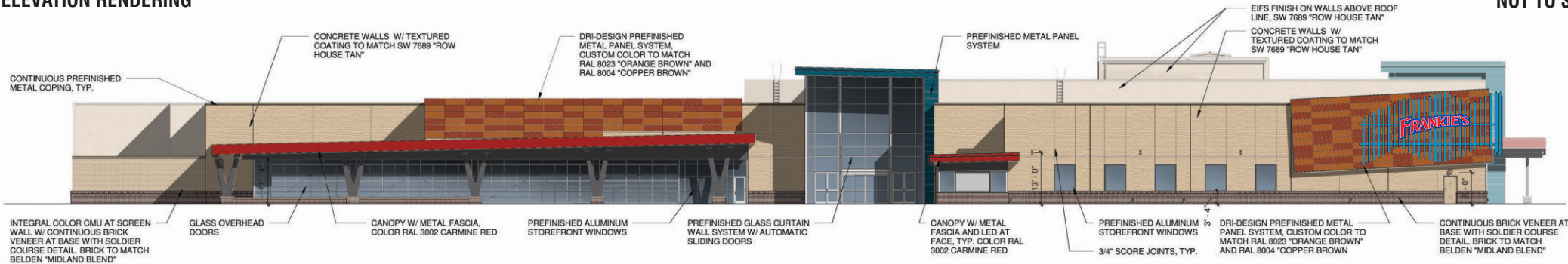
(1) Set of Face/Halo Lighted Channel Letters constructed of aluminum (6" deep). Letters finished in White. Letter faces of Red Acrylic. Faces held in place via 1" aluminum face retainers, finish in White. Letter Backs of Clear Lexan (for Halo Illumination). Face and Halo illumination via White LEDs. 120 Volts. All wiring UL approved.

Letters mounted to .250 Aluminum Backplate. Backplate with 1½" stand-off spacers. Backplate mounted to curved fascia via 6" x 6" Sq Tubes with non-corrosive fasteners. Specific Mounting Details TBD.

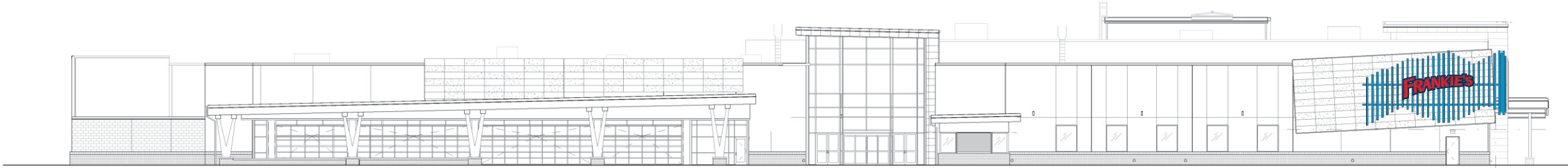
- Letter Returns: painted White (gloss finish)
- Letter Retainers: painted White (gloss finish)
- Letter Faces: Red Acrylic to match PANTONE 185 Red
- Face & Halo Illumination: White LEDs
- Backplate: painted to match PANTONE 2728 Blue (gloss finish)
- Mounting Tubes/Plates: painted to match PANTONE 89-1-4 C (finish TBD)



SOUTH ELEVATION RENDERING



NOT TO SCALE



SOUTH ELEVATION - Scale: 1/32" = 1'-0"



5800 McHines Place, Suite 110
Raleigh, NC 27616
Office 919 789-1452 | Cell 919 825-6917
www.capitalsignsolutions.com

© Copyright 2013 All designs and drawings are the sole property of Capital Sign Solutions, and may not be reproduced, published, changed or used in any way without written permission and consent. In addition, all ideas, contents of proposals, and all specifications of any project entered into with Capital Sign Solutions are all rights reserved.

Client:



Filename:

Frankies Charlotte
Exterior Signage (5)

Date:

07-27-16

Designer:

HH

Drawing No:

H-QT4678-4

Scale:

As Noted

Revision 1:

09/14/16

Revision 2:

03/28/17

Revision 3:

04/03/17

Revision 4:

09/22/17

Revision 5:

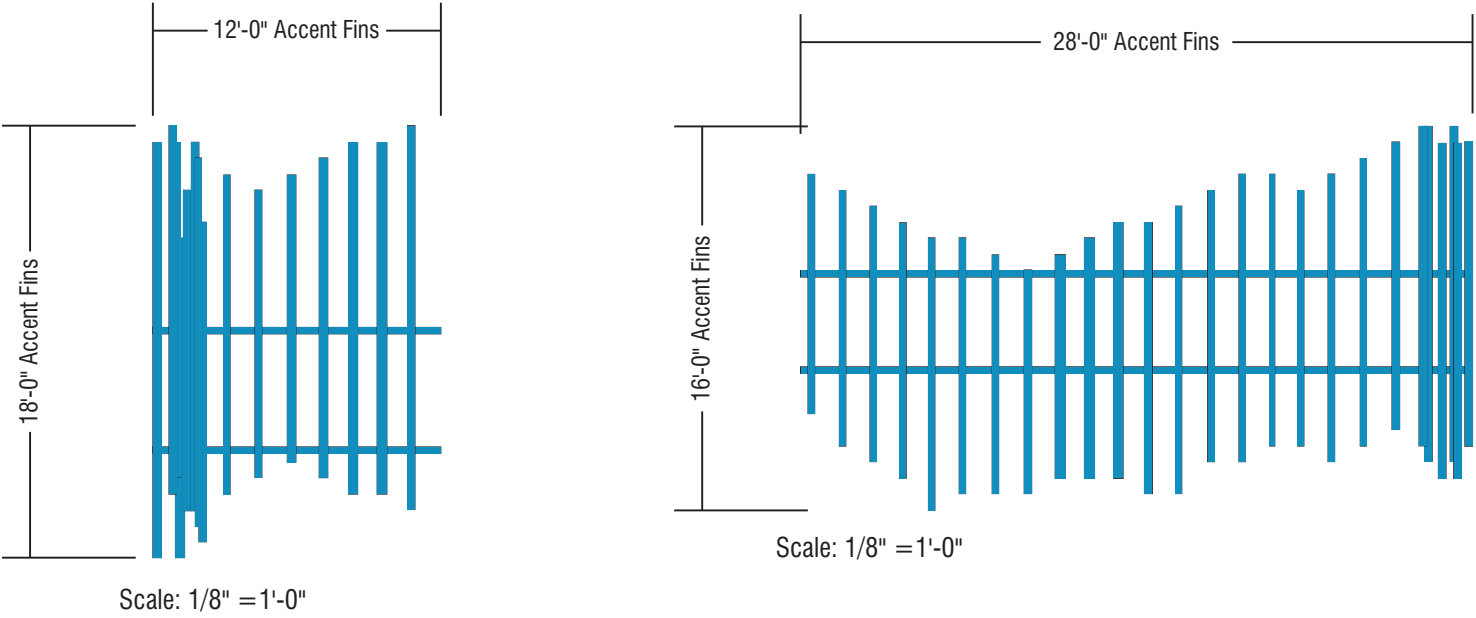
Revision 6:

Client Approval:

Landlord Approval:

$(18'-0" \times 12'-0" = 216.0 \text{ Sq Ft}) + (16'-0" \times 28'-0" = 448.0 \text{ Sq Ft}) = 664.0 \text{ Sq Ft PROPOSED}$

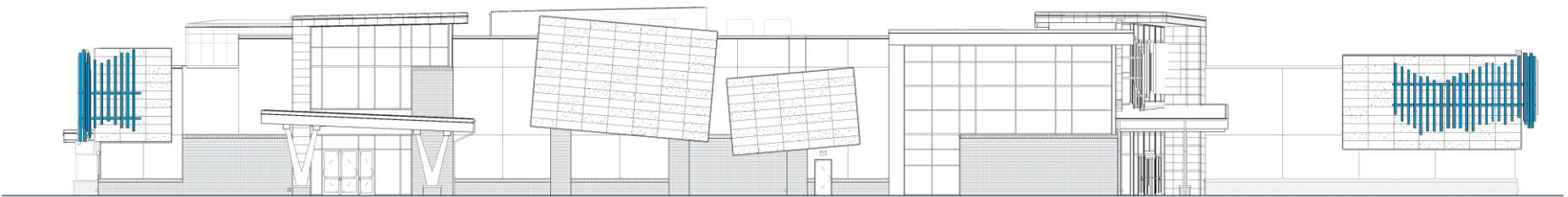
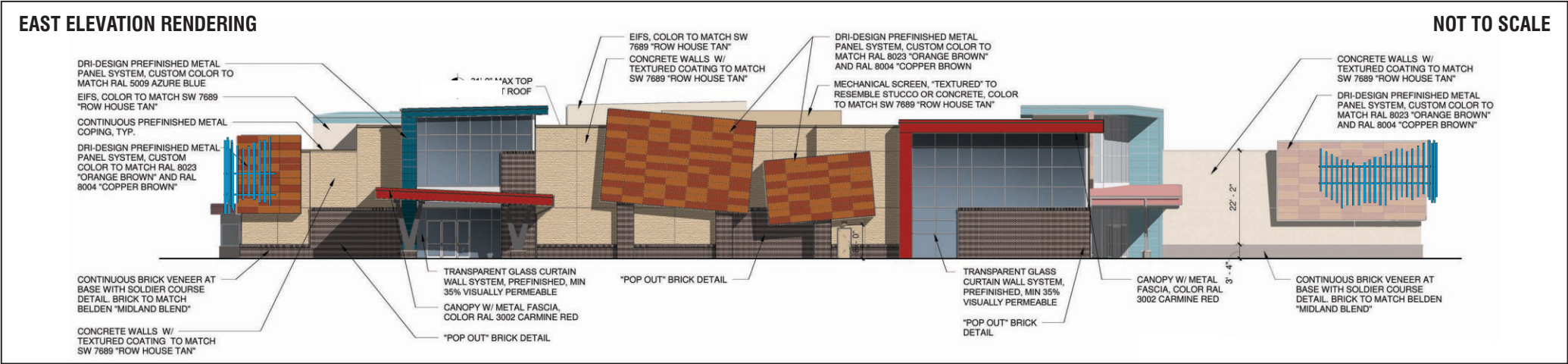
EAST ELEVATION



Non-lighted Building Accent "Fins" constructed of aluminum and finished to match PANTONE 89-1-4 C.

Accent "Fins" mounted to Building Fascia via aluminum sub-frame and non-corrosive fasteners. Exact Mounting Details TBD.

 Accent "Fins": painted to match PANTONE 89-1-4 C (finish TBD)



5800 McHines Place, Suite 110
Raleigh, NC 27616
Office 919 789-1452 | Cell 919 825-6917
www.capitalsignsolutions.com

© Copyright 2013 All designs and drawings are the sole property of Capital Sign Solutions, and may not be reproduced, published, changed or used in any way without written permission and consent. In addition, all ideas, contents of proposals, and all specifications of any project entered into with Capital Sign Solutions are all rights reserved.

Client:
FRANKIE'S

Filename:
Frankies Charlotte Exterior Signage (5)

Date:
07-27-16

Designer:
HH

Drawing No:
H-QT4678-5

Scale:
As Noted

Revision 1: **09/14/16**

Revision 2: **09/29/16**

Revision 3: **03/28/17**

Revision 4: **04/03/17**

Revision 5:

Revision 6:

Client Approval:

Landlord Approval:

“FINS” SUB-FRAME & SUPPORTS FOR LETTERS



CAPITAL SIGN SOLUTIONS

5800 McHines Place, Suite 110
Raleigh, NC 27616

Office 919 789-1452 | Cell 919 825-6917

www.capitalsignsolutions.com

© Copyright 2013 All designs and drawings are the sole property of Capital Sign Solutions, and may not be reproduced, published, changed or used in any way without written permission and consent. In addition, all ideas, contents of proposals, and all specifications of any project entered into with Capital Sign Solutions are all rights reserved.

Client:



Filename:

**Frankies Charlotte
Exterior Signage (5)**

Date:

09-14-16

Designer:

HH

Drawing No:

H-QT4678-6

Scale:

Not to Scale

Revision 1:

Revision 2:

Revision 3:

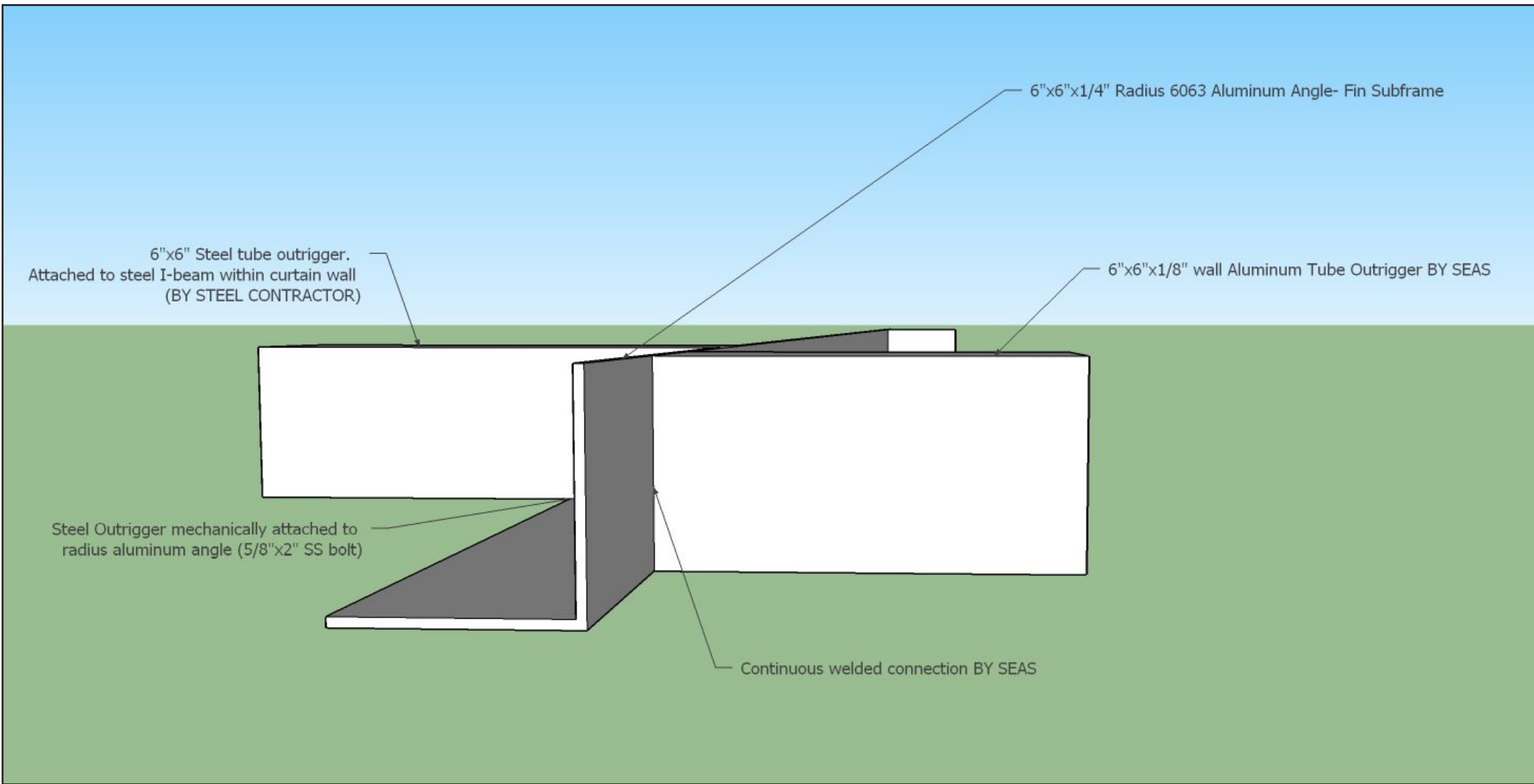
Revision 4:

Revision 5:

Revision 6:

Client Approval:

Landlord Approval:



“FINS” SITE PLAN



5800 McHines Place, Suite 110
Raleigh, NC 27616

Office 919 789-1452 | Cell 919 825-6917

www.capitalsignsolutions.com

© Copyright 2013 All designs and drawings are the sole property of Capital Sign Solutions, and may not be reproduced, published, changed or used in any way without written permission and consent. In addition, all ideas, contents of proposals, and all specifications of any project entered into with Capital Sign Solutions are all rights reserved.

Client:



Filename:

Frankies Charlotte Exterior Signage (5)

Date: _____

09-14-16

Designer:

HH

Drawing No:

H-QT4678-7

Scale:

Not to Scale

Revision 1: 04/03/17

Revision 1: 04/03/17

Revision 2:

Revision 3:

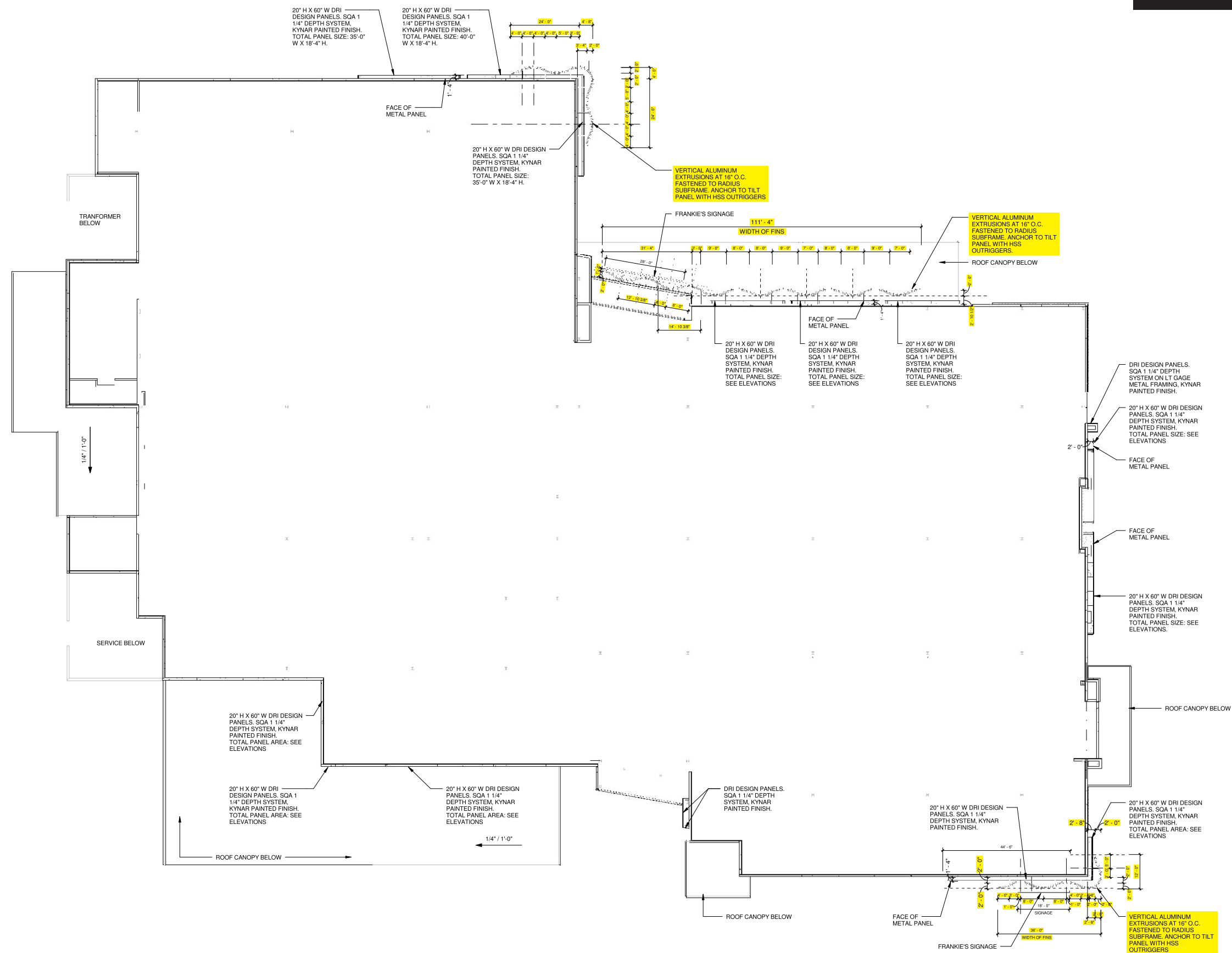
Revision 4:

Revision 5:

Revision 6:

Client Approval:

Landlord Approval:



SITE PLAN



Office 919 789-1452 | Cell 919 825-6917

www.capitalsignsolutions.com

© Copyright 2013 All designs and drawings are the sole property of Capital Sign Solutions, and may not be reproduced, published, changed or used in any way without written permission and consent. In addition, all ideas, contents of proposals, and all specifications of any project entered into with Capital Sign Solutions are all rights reserved.

Client:

FRANKIE'S

Filename:

Frankies Charlotte Exterior Signage (5)

Date:

07-27-16

Designer:

HH

Drawing No:

H-QT4678-8

Scale:

Not to Scale

Revision 1: 09/14/16

Revision 2: 09/29/16

Revision 3: 03/28/17

Revision 4: 04/03/17

Revision 5:

Revision 6:

Client Approval:

Landlord Approval:

PG. (8) of (8)

