

DRAWING INDEX

GENERAL

SP0 COVER SHEET

SITE PLAN

SP0.1	GENERAL NOTES
RZ1	REZONING PLAN
SP1	PRELIMINARY SITE PLAN
SP2	EXISTING CONDITIONS
SP3	ADJACENT PROPERTY OWNERS
SP4	TREE PRESERVATION PLAN
SP5	PRELIMINARY GRADING AND STORMWATER
SP6	SLOPE ANALYSIS
SP7	TURNING MOVEMENTS

SITE INFORMATION

SITE LOCATION
PARCEL NUMBER: 017-40-104
ETJ AREA: HUNTERSVILLE
TIME FRAME 2016-2017

ZONING INFORMATION	
EXISTING ZONING DISTRICT:	CB – COMMERCIAL BUSINESS
PROPOSED ZONING DISTRICT:	SP (CD) – SPECIAL PURPOSE (CD)
OVERLAY DISTRICT:	N/A
PRINCIPAL USES:	INDOOR RECREATION/RETAIL/OFFICE

<u>FLOODPLAIN INFORMATION</u>	
PERCENTAGE OF BUA ALLOWED:	70%
PERCENTAGE OF BUA ESTIMATED:	46.5%

WATERSHED INFORMATION
 STREAM WATERSHED: MCDOWELL
 REGULATED DRINKING WATERSHEDS: MTN ISLAND LAKE PA-2

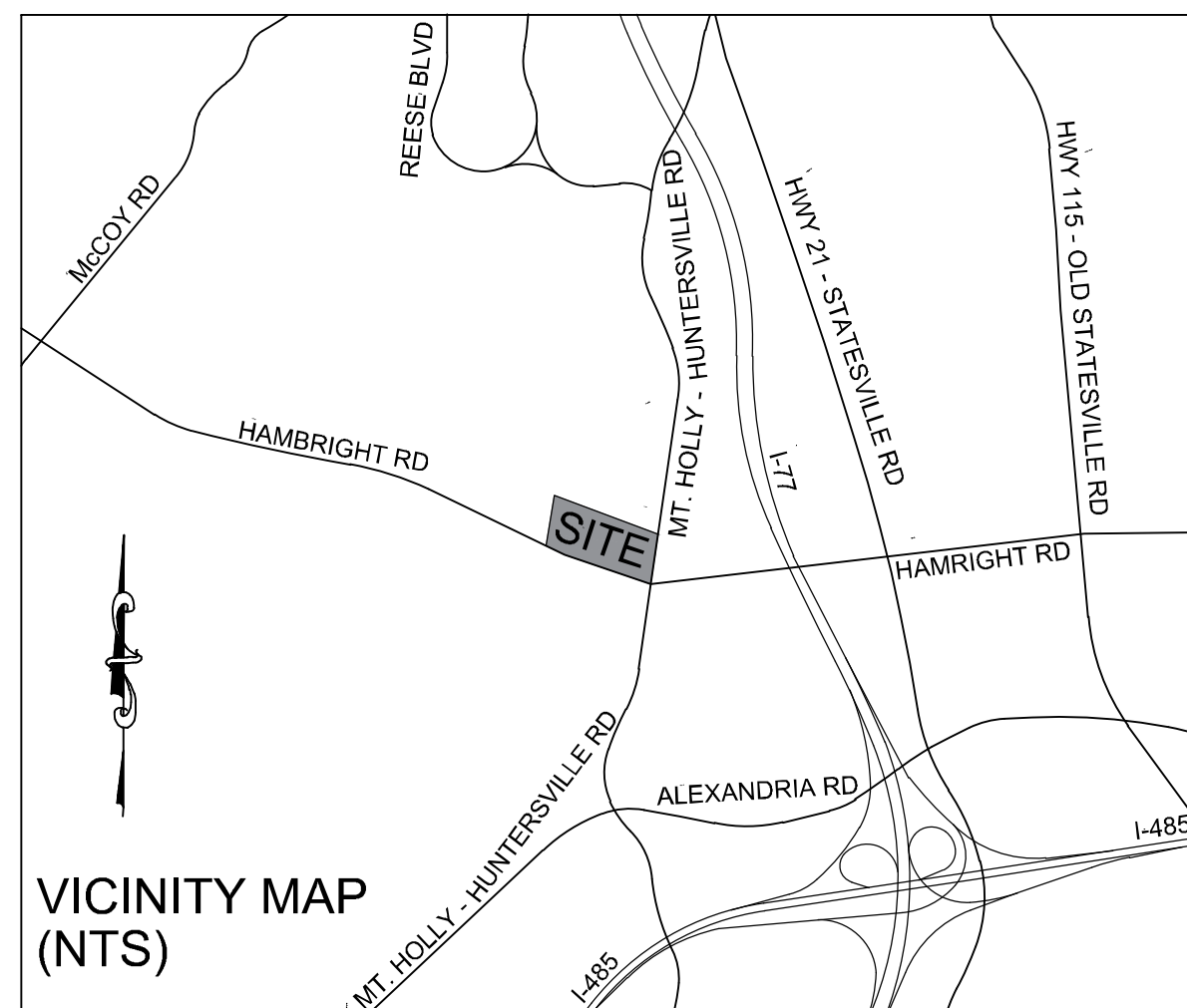
CONTACTS

OWNER:
SPORTS VILLAGE INC.
CONTACT: MIKE CLAPP
18635 STARCREEK DRIVE, UNIT F
CORNELIUS, NC 28031
PH: (704) 201-8876
MSCLAPP6@YAHOO.COM

ENGINEER:
DEWBERRY ENGINEERS INC.
TIM DERYLAK, P.E.
6135 LAKEVIEW RD, SUITE 150
CHARLOTTE, NC 28269
PH: (704) 625-5087
FAX: (704) 509-9937
TDERYLAK@DEWBERRY.COM

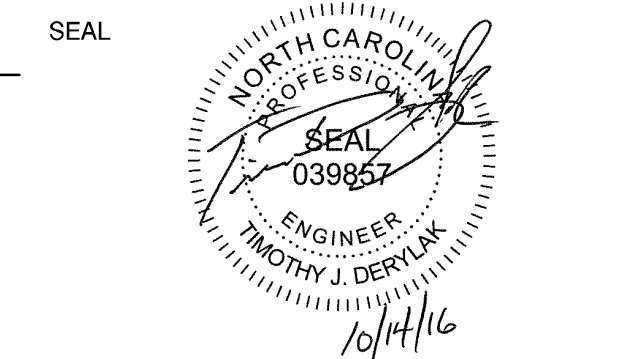


Know what's below.
Call before you dig.



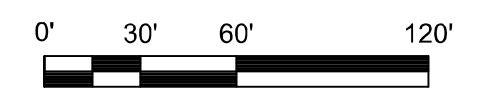
TOWN OF HUNTERSVILLE
SPORTS VILLAGE

MONTIENSVILLE, NORTH CAROLINA



KEY PLAN

SCALE: 1" = 60'

[illegible]

DRAWN BY _____

APPROVED BY _____

CHECKED BY _____

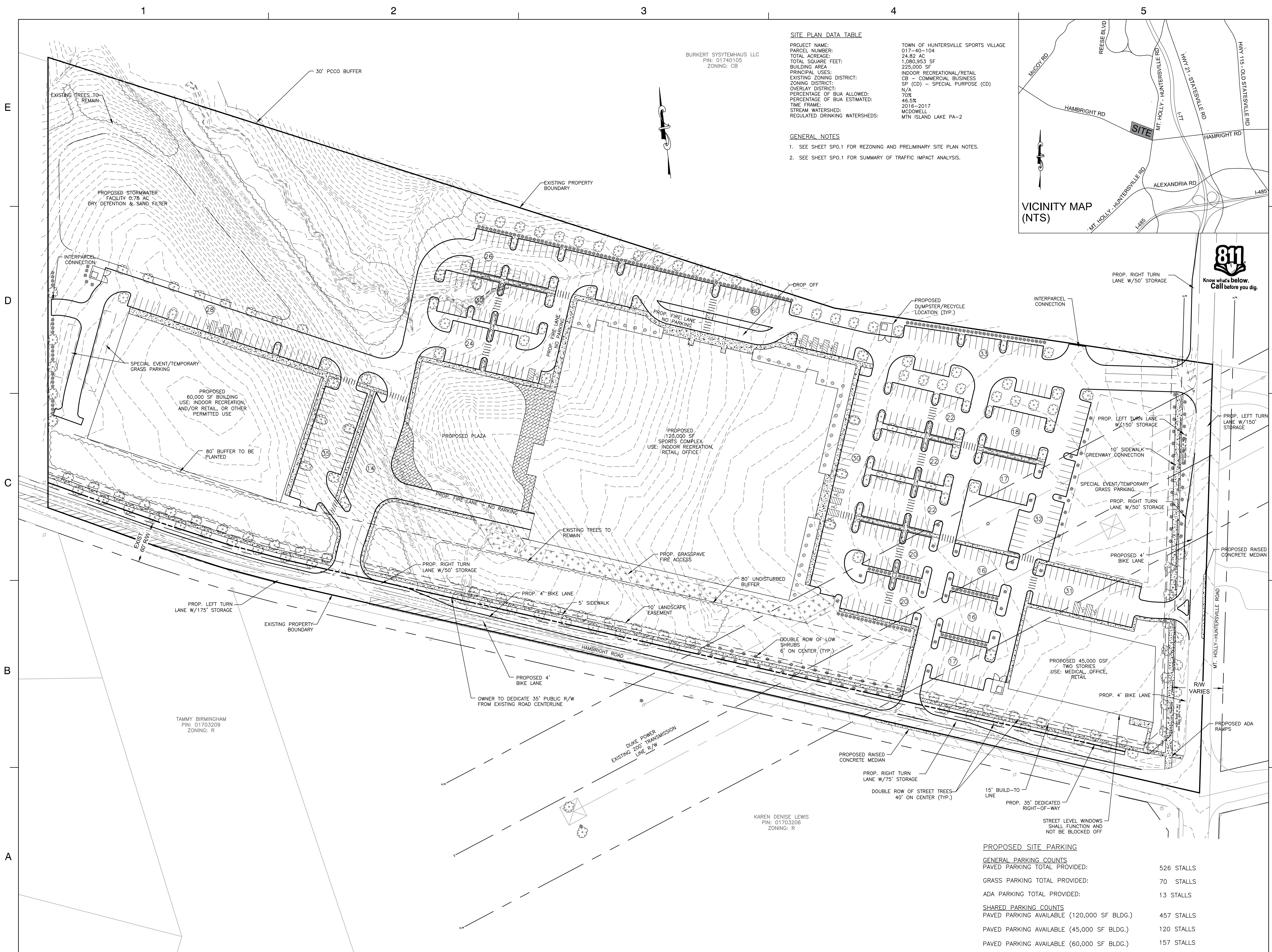
DATE JULY 29, 2016

TITLE

CONDITIONAL DISTRICT REZONING PLAN

PROJECT NO. 50083178

RZ1



<u>PROPOSED SITE PARKING</u>	
<u>GENERAL PARKING COUNTS</u>	
PAVED PARKING TOTAL PROVIDED:	526 STALLS
GRASS PARKING TOTAL PROVIDED:	70 STALLS
ADA PARKING TOTAL PROVIDED:	13 STALLS
<u>SHARED PARKING COUNTS</u>	
PAVED PARKING AVAILABLE (120,000 SF BLDG.)	457 STALLS
PAVED PARKING AVAILABLE (45,000 SF BLDG.)	120 STALLS
PAVED PARKING AVAILABLE (60,000 SF BLDG.)	157 STALLS

E

D

C

B

A

REZONING AND PRELIMINARY SITE PLAN NOTES

- ALL DEVELOPMENT AND CONSTRUCTION SHALL COMPLY WITH ALL ZONING AND SUBDIVISION STANDARDS OF THE TOWN OF HUNTERSVILLE, MECKLENBURG COUNTY, AND NCDOT, AS APPLICABLE.
- THE PROPOSED BUILDINGS, PARKING, SIDEWALKS, AND OTHER SITE ELEMENTS SHOWN ON THE SITE PLAN ARE INTENDED TO REFLECT THE ARRANGEMENT OF PROPOSED USES ON THE SITE, BUT THE EXACT CONFIGURATION, PLACEMENT AND SIZE OF INDIVIDUAL SITE ELEMENTS MAY BE ALTERED OR MODIFIED WITHIN THE LIMITS PRESCRIBED BY THE ABOVE LISTED ORDINANCES DURING THE DESIGN DEVELOPMENT AND CONSTRUCTION PHASES.
- THIS PROPERTY MAY BE SUBJECT TO ANY EASEMENTS AND/OR RIGHT-OF-WAY OF RECORD.
- ACCESS (INGRESS/EGRESS) LOCATION AND DESIGN SHOWN ON THIS SKETCH PLAN AREA SUBJECT TO ACHIEVING VERTICAL AND HORIZONTAL SIGHT DISTANCES, TURN LANE IMPROVEMENTS (INCLUDING RIGHT-OF-WAY) AND INTERSECTION WITH ADJACENT AND OPPOSING ACCESS POINTS. MODIFICATION TO PLAN MAY RESULT.
- LARGE MATURING TREES WILL BE PLANTED 40' ON CENTER WITHIN THE REQUIRED PLANTING STRIP ALONG ALL STREETS. SMALL MATURING TREES ARE TO BE USED WHERE OVERHEAD POWER LINES EXIST.
- THE TOWN OF HUNTERSVILLE BUILD-TO LINE IS DEFINED AS, "A LINE EXTENDING THROUGH A LOT WHICH IS GENERALLY PARALLEL TO THE FRONT PROPERTY LINE AND MARKS THE LOCATION FROM WHICH THE PRINCIPLE VERTICAL PLANE OF THE FRONT BUILDING ELEVATION, EXCLUSIVE OF PORCHES, BAY WINDOWS AND SIMILAR APPURTENANCES, MUST BE ERECTED; INTENDED TO CREATE AN EVEN BUILDING FACADE LINE ON A STREET. THE BUILD-TO LINE IS ESTABLISHED ON THE RECORD PLAT (FINAL PLANT)."
- THE PROPOSED DEVELOPMENT WILL CONSIST OF A GRAVITY DRIVEN SANITARY SEWER SYSTEM. THE SANITARY SEWER WILL SERVE EACH PROPOSED BUILDING AND TIE TO THE PROPOSED PUBLIC SYSTEM WITHIN THE DEVELOPMENT.
- THE PROPOSED DEVELOPMENT WILL CONSIST OF A PUBLIC WATER MAIN EXTENSION ALONG HAMBRIGHT ROAD. THE SITE WILL INCLUDE PRIVATE WATER LINES WHICH WILL TIE INTO THE PROPOSED PUBLIC WATER LINE LOCATED IN HAMBRIGHT ROAD RIGHT-OF-WAY.
- ALL RETAINING WALLS REQUIRING SPECIAL INSPECTIONS (GREATER THAN 5' IN HEIGHT) SHALL MEET THE REQUIREMENTS OF THE MCSBC CHAPTER 17 - SPECIAL INSPECTIONS AS DETAILED PER THE MECKLENBURG COUNTY CODE ENFORCEMENT SPECIAL INSPECTIONS PROCESS. ADDITIONALLY, COPIES OF THE RETAINING WALL PLANS SHALL BE SUBMITTED TO THE HUNTERSVILLE ENGINEERING DEPARTMENT FOR REVIEW AND APPROVAL. THE TOWN OF HUNTERSVILLE SHALL BE COPIED ON ALL STATEMENTS OF SPECIAL INSPECTIONS, SPECIAL INSPECTIONS FINAL REPORTS, AND DESIGN PRINCIPAL IN RESPONSIBLE CHARGE (DPIRC) LETTERS.
- THE PROPERTY IS TO BE CONSIDERED HIGH DENSITY.
- THIS PROJECT WILL BE BUILT AS ONE PHASE. OWNER RESERVES THE RIGHT TO PHASE PROJECT.
- ALL EXTERIOR LIGHTING SHALL MEET ARTICLE 8.26 OF THE HUNTERSVILLE ZONING ORDINANCE.
- ROOFTOP EQUIPMENT SHALL NOT BE VISIBLE FROM GRADE.
- THE 80' UNDISTURBED BUFFER MAY NEED TO BE SUPPLEMENTED WITH EVERGREEN TREES TO REDUCE VISIBILITY.
- THE SHOWN GRAPHICS ARE PRELIMINARY AND BE BE ALTERED OR CHANGED SLIGHTLY TO ADDRESS CONSTRUCTION NEEDS.
- THIS REZONING PLAN IS BEING REVIEWED CONCURRENTLY WITH A MULTI-BUILDING PRELIMINARY SITE PLAN. ALL DETAILS AND SPECIFICATIONS NOTED ON THE PRELIMINARY SITE PLAN ARE APPLICABLE TO THIS REZONING PLAN.
- THIS REZONING PLAN IS BEING REVIEWED CONCURRENTLY WITH A TEXT AMENDMENT PROPOSAL TO AMEND ZONING ORDINANCE ARTICLE 3, SECTION 3.2.10(G) TO INCLUDE INDOOR RECREATION AS AN ALLOWED USE, AND THE REZONING CANNOT BE APPROVED WITHOUT THE TEXT AMENDMENT APPROVAL.

TRAFFIC IMPROVEMENTS PER TIA

PER THE TRAFFIC IMPACT ANALYSIS BY RAMEY KEMP, THE FOLLOWING ROAD IMPROVEMENTS ARE NEEDED TO MEET THE TOWN OF HUNTERSVILLE ORDINANCE:

- HAMBRIGHT ROAD AT SITE DRIVEWAY 1
 - CONSTRUCT 36' DRIVEWAY WITH RIGHT AND LEFT EXIT LANES
 - CONSTRUCT EASTBOUND LEFT TURN LANE WITH 175' OF STORAGE
 - CONSTRUCT WESTBOUND RIGHT TURN LANE WITH 50' OF STORAGE
- HAMBRIGHT ROAD AT SITE DRIVEWAY 2
 - CONSTRUCT WESTBOUND RIGHT TURN LANE WITH 75' OF STORAGE
 - CONSTRUCT 4' WIDE RAISED CONCRETE MEDIAN TO RESTRICT ACCESS
- MT. HOLLY-HUNTERSVILLE ROAD AT SITE DRIVEWAY 3
 - CONSTRUCT SOUTHBOUND RIGHT TURN LANE WITH 75' OF STORAGE
 - CONSTRUCT 4' WIDE RAISED CONCRETE MEDIAN TO RESTRICT ACCESS
- MT. HOLLY-HUNTERSVILLE ROAD AT SITE DRIVEWAY 4
 - CONSTRUCT 36' DRIVEWAY WITH RIGHT AND LEFT EXIT LANES
 - CONSTRUCT NORTHBOUND LEFT TURN LANE WITH 100' OF STORAGE
 - CONSTRUCT SOUTHBOUND RIGHT TURN LANE WITH 50' OF STORAGE
- GILEAD ROAD AND MCCOY ROAD
 - REPHASE THE EASTBOUND PERMITTED LEFT TURN MOVEMENT AS PROTECTED/PERMITTED
- MCIWANE ROAD AND MCCOY ROAD
 - CONSTRUCT NORTHBOUND LEFT TURN LANE WITH 175' OF STORAGE
- REESE BLVD. AND MT. HOLLY-HUNTERSVILLE ROAD
 - SIGNALIZE INTERSECTION AND CONSTRUCT DUAL NORTHBOUND LEFT TURN LANES WITH 225' OF STORAGE
- SOUTH OLD STATESVILLE ROAD AND MT. HOLLY-HUNTERSVILLE ROAD
 - CONSTRUCT EASTBOUND RIGHT TURN LANE WITH 50' OF STORAGE
- SOUTH OLD STATESVILLE ROAD AND GILEAD ROAD
 - CONSTRUCT EASTBOUND RIGHT TURN LANE WITH 175' OF STORAGE
- HAMBRIGHT ROAD AND MT. HOLLY-HUNTERSVILLE ROAD
 - CONSTRUCT EASTBOUND LEFT TURN LANE WITH 200' OF STORAGE
 - CONSTRUCT WESTBOUND LEFT TURN LANE WITH 50' OF STORAGE

PARKING

- PARKING SPACES SHOWN ON SITE PLAN ARE PROVIDED AT A RATE OF 1 SPACE PER 500 SF OF BUILDING AREA.

GENERAL PARKING COUNTS	
PAVED PARKING TOTAL PROVIDED:	526 STALLS
GRASS PARKING TOTAL PROVIDED:	70 STALLS
ADA PARKING TOTAL PROVIDED:	13 STALLS
SHARED PARKING COUNTS	
PAVED PARKING AVAILABLE (120,000 SF BLDG.)	457 STALLS
PAVED PARKING AVAILABLE (45,000 SF BLDG.)	120 STALLS
PAVED PARKING AVAILABLE (60,000 SF BLDG.)	157 STALLS

SITE PLAN DATA TABLE

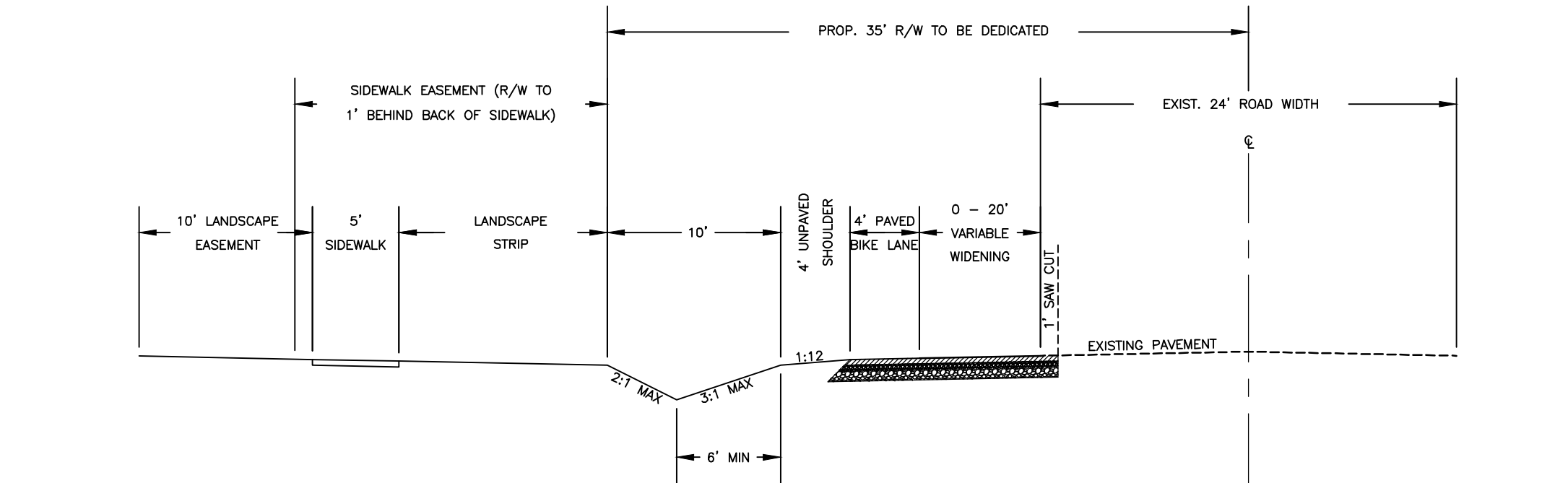
PROJECT NAME:	TOWN OF HUNTERSVILLE SPORTS VILLAGE
PARCEL NUMBER:	017-40-104
TOTAL ACREAGE:	24.82 AC
TOTAL SQUARE FEET:	1,080,953 SF
BUILDING AREA:	225,000 SF
PRINCIPAL USES:	INDOOR RECREATIONAL/RETAIL
EXISTING ZONING DISTRICT:	CB - COMMERCIAL BUSINESS
ZONING DISTRICT:	SP (CD) - SPECIAL PURPOSE (CD)
OVERLAY DISTRICT:	N/A
PERCENTAGE OF BUA ALLOWED:	70%
PERCENTAGE OF BUA ESTIMATED:	46.5%
FRONT BUILD-TO-LINE:	15'
TIME FRAME:	2016-2017
STREAM WATERSHED:	MCDOWELL
REGULATED DRINKING WATERSHEDS:	MTN ISLAND LAKE PA-2

PERMITTED USES

- THE PROPOSED USES OF EACH BUILDING LISTED ON THE SITE PLAN REPRESENT POTENTIAL USES OF EACH BUILDING.
- THE OWNER RESERVES THE RIGHT TO ALTER THE BUILDINGS' USES WITHIN THE LIMITS OF THE OF THE ALLOWED USES SPECIFIED BY THE SP(CD) ZONING DISTRICT IN THE TOWN OF HUNTERSVILLE ZONING ORDINANCE WITH THE EXCEPTION OF THE FOLLOWING USES:
FOUNDRIES, LUMBERMILLS AND STORAGE YARDS, POWER GENERATION PLANTS, RAILROAD FREIGHT YARDS, REPAIR SHOPS, MARSHALING YARDS, AIRPORTS, CORRECTIONAL FACILITY, HALFWAY HOUSES, HAZARDOUS OR INFECTIOUS MATERIAL INCINERATION, HANDLING, OR STORAGE, OFF-SITE LOID AND C&D LANDFILLS, OTHER ENVIRONMENTALLY SENSITIVE USES NOT EXPRESSLY PERMITTED IN THE SP OR OTHER DISTRICTS, QUARRIES, RACEWAYS AND DRAG STRIPS, SANITARY LANDFILLS, SOLAR ENERGY FACILITY (MAJOR), SOLID WASTE INCINERATION, TRANSFER STATION FOR ORGANIC AND INORGANIC WASTE PRODUCTS, WIND ENERGY FACILITY (MAJOR), INORGANIC RESIDENTIAL HOUSEHOLD WASTE AND INTAKE AND TRANSFER OFF-SITE, YARD WASTE INTAKE AND PROCESSING, JUNK YARDS, PETROLEUM STORAGE FACILITIES, AND TRUCKING TERMINALS.

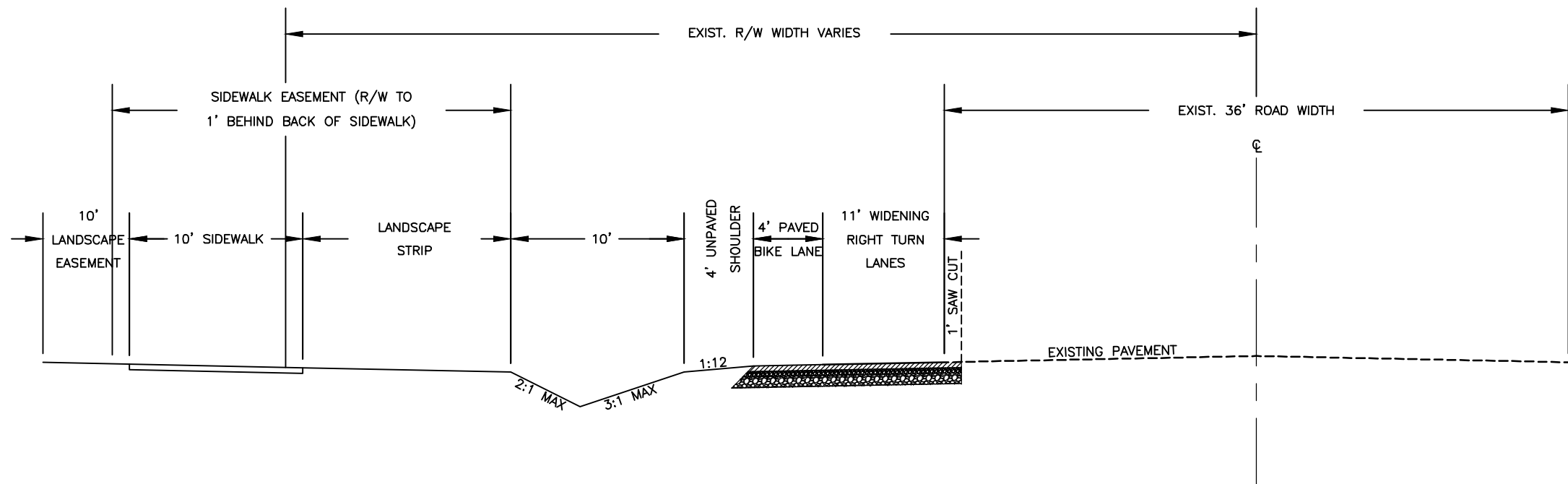
FIRE PROTECTION

- FIRE HYDRANTS ARE REQUIRED WITHIN 750' OF MOST REMOTE POINT OF STRUCTURES AS THE APPARATUS TRAVELS.
- FIRE HYDRANTS SHALL BE PROVIDED WITHIN 200' OF FDC'S AS THE APPARATUS TRAVELS.
- FIRE APPARATUS ACCESS ROADS SHALL BE DESIGNED AND MAINTAINED TO SUPPORT THE IMPOSED LOADS OF FIRE APPARATUS OF 80,000 POUNDS.
- DEAD END FIRE APPARATUS ACCESS ROADS IN EXCESS OF 150 FEET IN LENGTH SHALL BE PROVIDED WITH AN APPROVED AREA FOR TURNING AROUND FIRE APPARATUS.



HAMBRIGHT ROAD TYPICAL CROSS-SECTION

- WIDENING VARIES FROM 0' TO AN ESTIMATED 20' FOR THE ADDITION OF THE RIGHT TURN LANE AND 0' TO 24' FOR A RIGHT TURN LANE AND LEFT TURN LANE ON HAMBRIGHT ROAD. ACTUAL WIDTHS MAY VARY TO MEET THE MINIMUM LANE WIDTH REQUIREMENTS.
- PER NCDOT AND TOWN OF HUNTERSVILLE GUIDELINES, TREES ARE TO BE PLANTED A MINIMUM OF 5' FROM THE TOP OF DITCH AND BE A MINIMUM OF 3.5' FROM THE EDGE OF THE SIDEWALK.
- SIDEWALKS WHICH LIE OUTSIDE OF THE R/W SHALL BE WITHIN A PERMANENT SIDEWALK EASEMENT WHICH EXTENDS FROM THE R/W TO A POINT 1 FT BEHIND THE SIDEWALK.
- CURB AND GUTTER MAY BE USED INSTEAD OF DITCH SECTION, UPON APPROVAL BY HUNTERSVILLE AND NCDOT.



MT. HOLLY-HUNTERSVILLE ROAD TYPICAL CROSS-SECTION

- WIDENING VARIES FROM 0' TO AN ESTIMATED 11' FOR THE ADDITION OF THE RIGHT TURN LANES ON MT. HOLLY-HUNTERSVILLE ROAD. ACTUAL WIDTHS MAY VARY TO MEET THE MINIMUM LANE WIDTH REQUIREMENTS.
- PER NCDOT AND TOWN OF HUNTERSVILLE GUIDELINES, TREES ARE TO BE PLANTED A MINIMUM OF 5' FROM THE TOP OF DITCH AND BE A MINIMUM OF 3.5' FROM THE EDGE OF THE SIDEWALK.
- SIDEWALKS WHICH LIE OUTSIDE OF THE R/W SHALL BE WITHIN A PERMANENT SIDEWALK EASEMENT WHICH EXTENDS FROM THE R/W TO A POINT 1 FT BEHIND THE SIDEWALK.
- CURB AND GUTTER MAY BE USED INSTEAD OF DITCH SECTION, UPON APPROVAL BY HUNTERSVILLE AND NCDOT.

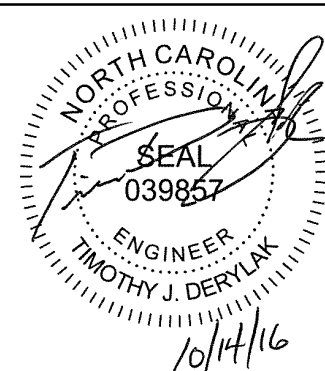


Dewberry Engineers Inc.
6135 Lakeview Rd - Suite 150
Charlotte, NC 28269
Phone: 704.509.9918
Fax: 704.509.9937
www.dewberry.com
NCBELS #F-0929

TOWN OF HUNTERSVILLE
SPORTS VILLAGE

HUNTERSVILLE, NORTH CAROLINA

SEAL



KEY PLAN

1	10/12/16	ADS	TOWN COMMENTS
NO.	DATE	BY	DESCRIPTION

REVISIONS

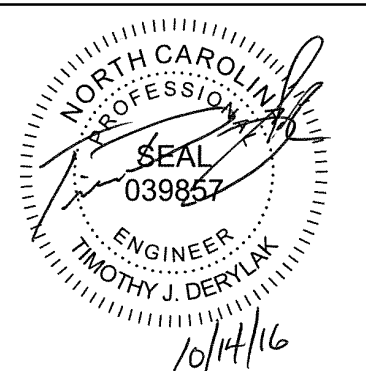
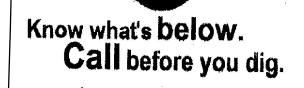
DRAWN BY _____
APPROVED BY _____
CHECKED BY _____
DATE JULY 29, 2016
TITLE

GENERAL NOTES

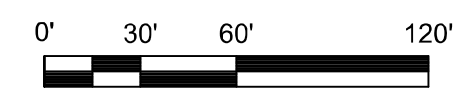
PROJECT NO. 50083178

SP0.1

HUNTERVILLE, NORTH CAROLINA



SCALE:

[illegible]

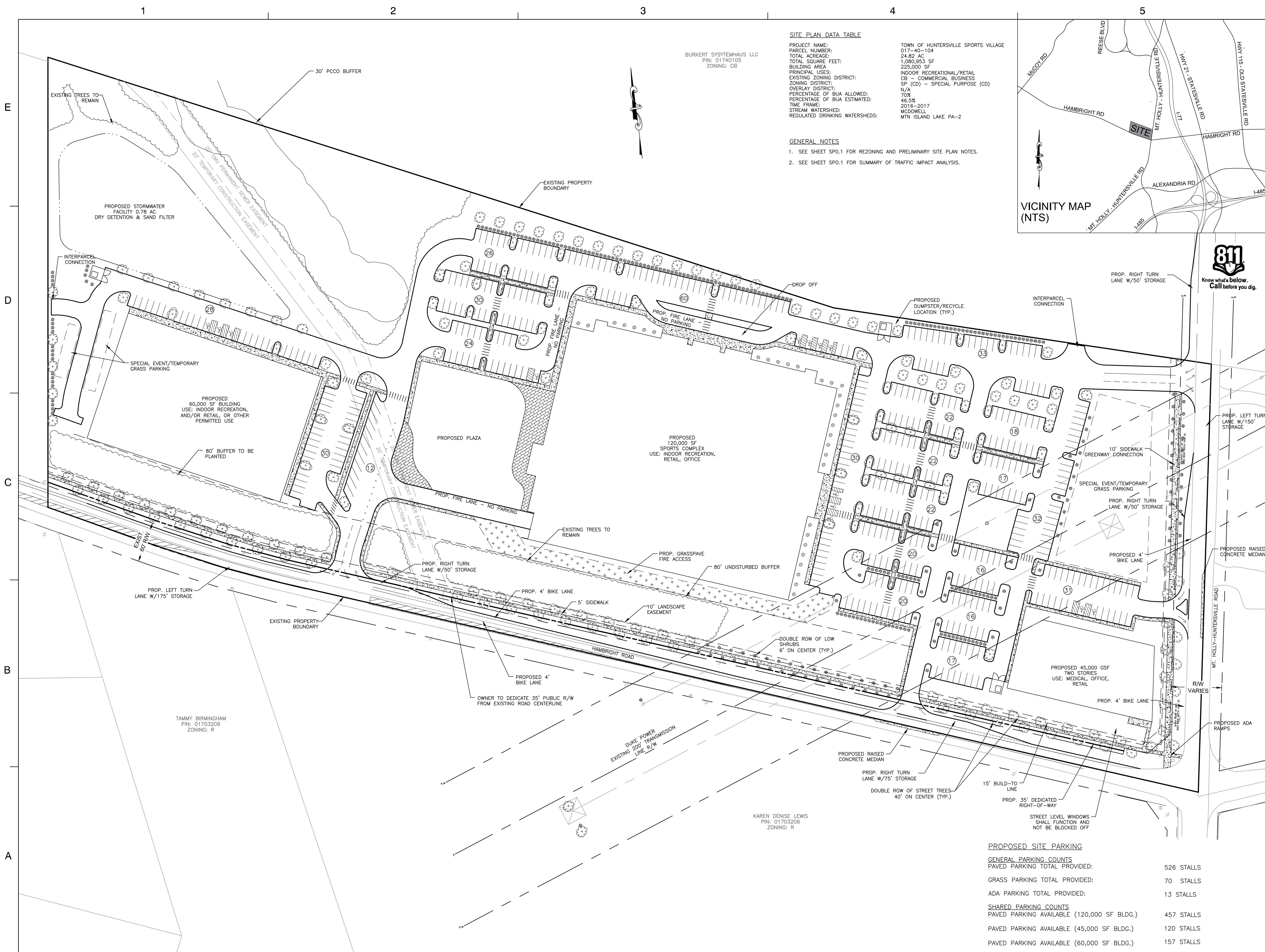
1	10/12/16	ADS	TOWN COMMENTS
NO.	DATE	BY	DESCRIPTION

REVISIONS

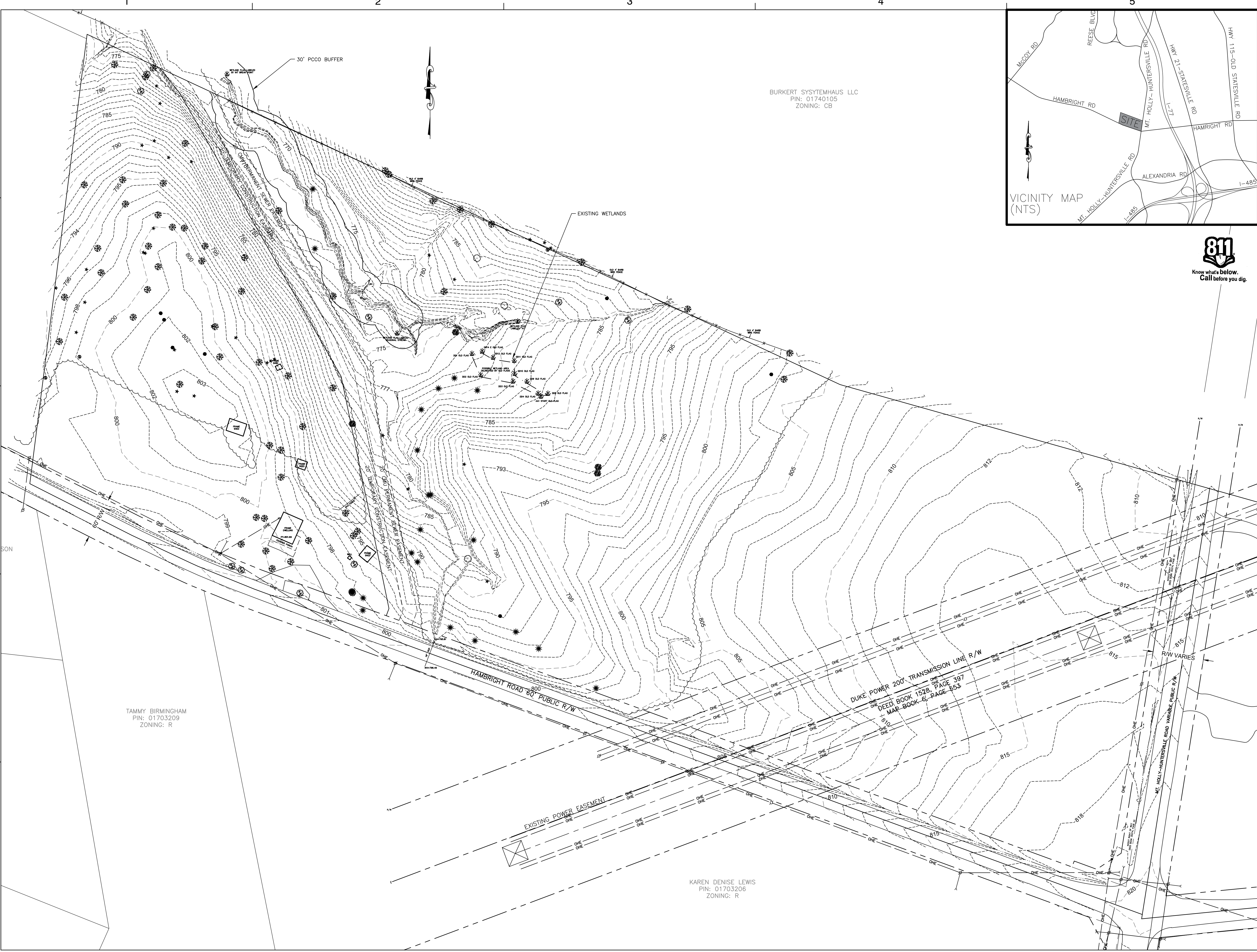
TITLE

PROJECT NO.	50083178
-------------	----------

SP1



<u>PROPOSED SITE PARKING</u>	
<u>GENERAL PARKING COUNTS</u>	
PAVED PARKING TOTAL PROVIDED:	526 STALLS
GRASS PARKING TOTAL PROVIDED:	70 STALLS
ADA PARKING TOTAL PROVIDED:	13 STALLS
<u>SHARED PARKING COUNTS</u>	
PAVED PARKING AVAILABLE (120,000 SF BLDG.)	457 STALLS
PAVED PARKING AVAILABLE (45,000 SF BLDG.)	120 STALLS
PAVED PARKING AVAILABLE (60,000 SF BLDG.)	157 STALLS



Dewberry Engineers Inc.
6135 Lakeview Rd - Suite 150
Charlotte, NC 28269
Phone: 704.509.9918
Fax: 704.509.9937
www.dewberry.com
NCBELS #F-0929

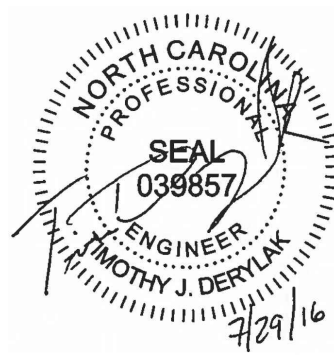
HUNTERSVILLE SPORTS VILLAGE

HUNTERSVILLE, NORTH CAROLINA



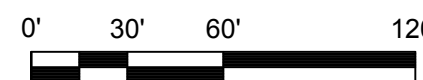
Know what's below.
Call before you dig.

SEAL



KEY PLAN

SCALE: 1" = 60'



No.	DATE	BY	Description

REVISIONS

DRAWN BY _____
APPROVED BY _____
CHECKED BY _____
DATE JULY 29, 2016
TITLE

EXISTING CONDITIONS

PROJECT NO. 50083178

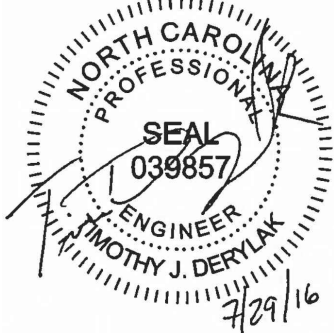
SP2



Dewberry Engineers Inc.
6135 Lakeview Rd - Suite 150
Charlotte, NC 28269
Phone: 704.509.9918
Fax: 704.509.9937
www.dewberry.com
NCBELS #F-0929

HUNTERSVILLE SPORTS VILLAGE
HUNTERSVILLE, NORTH CAROLINA

SEAL



KEY PLAN

SCALE: 1" = 100'



No.	DATE	BY	Description

REVISIONS

DRAWN BY _____

APPROVED BY _____

CHECKED BY _____

DATE JUNE 29, 2016

TITLE

EXISTING ZONING AND
ADJACENT PROPERTY
OWNER INFORMATION

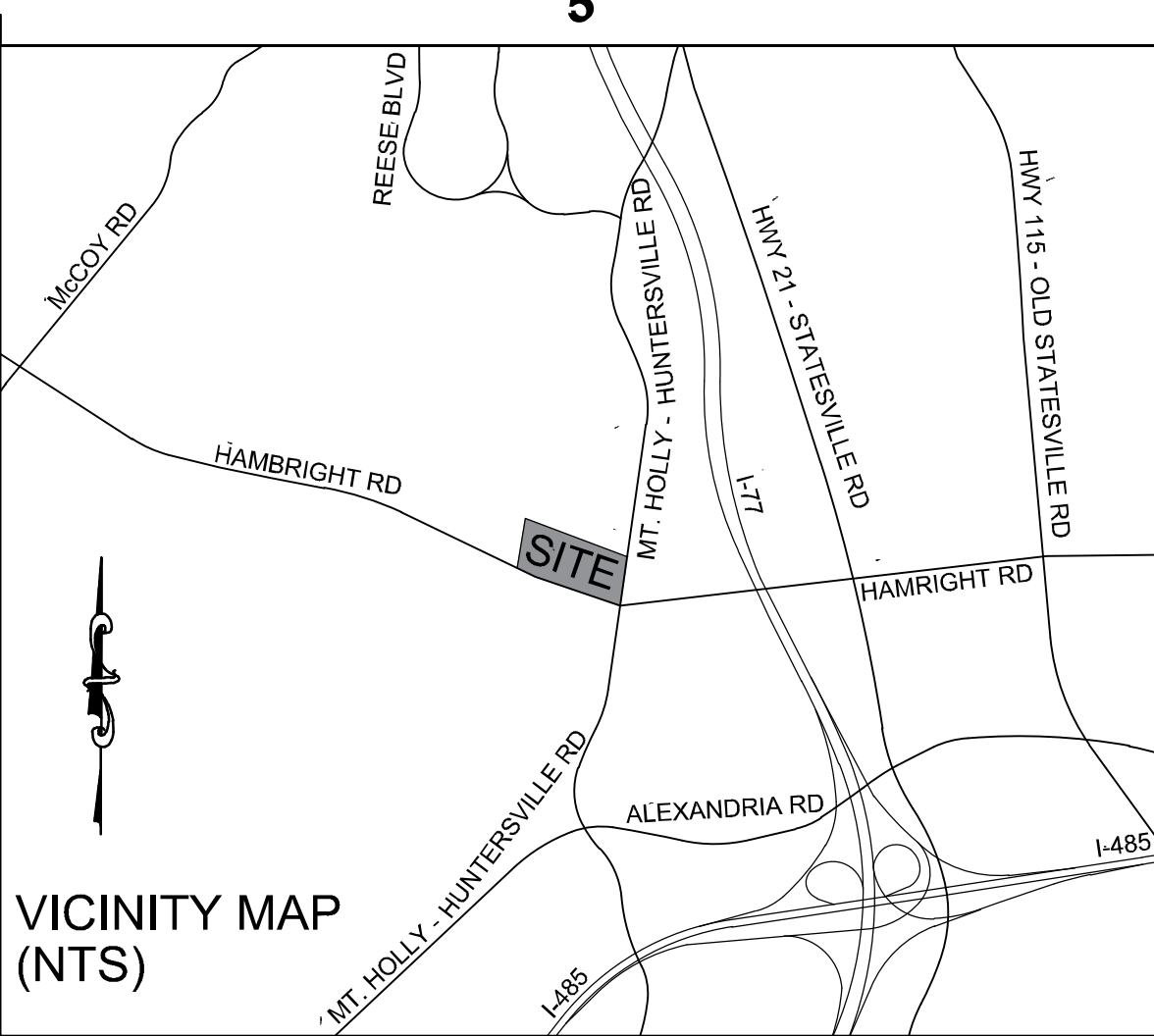
PROJECT NO. 50083178


SP3

TREE ID	DIAMETER	SPECIES	DESIGNATION	STATUS
1	6 in	SOURWOOD	NON-SPECIMEN	REMOVED
2	6 in	SOURWOOD	NON-SPECIMEN	REMOVED
3	30 in	OAK	SPECIMEN	REMOVED
4	5 in	DOGWOOD	NON-SPECIMEN	REMOVED
5	4 in	DOGWOOD	NON-SPECIMEN	REMOVED
6	30 in	OAK	SPECIMEN	REMOVED
7	6 in	DOGWOOD	NON-SPECIMEN	REMOVED
8	24 in	OAK	SPECIMEN	REMOVED
9	6 in	DOGWOOD	NON-SPECIMEN	REMOVED
10	30 in	OAK	SPECIMEN	REMOVED
11	4 in	DOGWOOD	NON-SPECIMEN	REMOVED
12	24 in	OAK	SPECIMEN	REMOVED
13	4 in	DOGWOOD	NON-SPECIMEN	REMOVED
14	32 in	OAK	SPECIMEN	REMOVED
15	24 in	OAK	SPECIMEN	REMOVED
16	26 in	OAK	SPECIMEN	REMOVED
17	4 in	PERSIMMON	NON-SPECIMEN	REMOVED
18	6 in	PERSIMMON	NON-SPECIMEN	REMOVED
19	10 in	PERSIMMON	NON-SPECIMEN	REMOVED
20	5 in	DOGWOOD	NON-SPECIMEN	REMOVED
21	34 in	OAK	SPECIMEN	REMOVED
22	5 in	DOGWOOD	NON-SPECIMEN	REMOVED
23	5 in	DOGWOOD	NON-SPECIMEN	REMOVED
24	6 in	PERSIMMON	NON-SPECIMEN	REMOVED
25	28 in	OAK	SPECIMEN	REMOVED
26	4 in	DOGWOOD	NON-SPECIMEN	REMOVED
27	38 in	OAK	SPECIMEN	REMOVED
28	24 in	OAK	SPECIMEN	REMOVED
29	6 in	DOGWOOD	NON-SPECIMEN	REMOVED
30	42 in	OAK	SPECIMEN	REMOVED
31	3 in	DOGWOOD	NON-SPECIMEN	REMOVED
32	3 in	DOGWOOD	NON-SPECIMEN	REMOVED
33	3 in	DOGWOOD	NON-SPECIMEN	REMOVED
34	24 in	OAK	SPECIMEN	REMOVED
35	24 in	OAK	SPECIMEN	REMOVED
36	24 in	GUM	SPECIMEN	REMOVED
37	30 in	OAK	SPECIMEN	REMOVED
38	15 in	OAK	NON-SPECIMEN	REMOVED
39	24 in	OAK	SPECIMEN	REMOVED
40	36 in	OAK	SPECIMEN	REMOVED
41	24 in	OAK	SPECIMEN	REMOVED
42	22 in	OAK	NON-SPECIMEN	REMOVED
43	24 in	OAK	SPECIMEN	REMOVED

TREE ID	DIAMETER	SPECIES	DESIGNATION	STATUS
44	36 in	OAK	SPECIMEN	REMOVED
45	18 in	OAK	NON-SPECIMEN	REMOVED
46	24 in	OAK	NON-SPECIMEN	REMOVED
47	7 in	HARDWOOD	NON-SPECIMEN	REMOVED
48	24 in	MAPLE	SPECIMEN	REMOVED
49	24 in	PINE	SPECIMEN	REMOVED
50	24 in	PINE	SPECIMEN	REMOVED
51	5 in	DOGWOOD	NON-SPECIMEN	REMOVED
52	24 in	PINE	SPECIMEN	REMOVED
53	24 in	PINE	SPECIMEN	REMOVED
54	5 in	DOGWOOD	NON-SPECIMEN	REMOVED
55	24 in	PINE	SPECIMEN	REMOVED
56	6 in	DOGWOOD	NON-SPECIMEN	REMOVED
57	24 in	PINE	SPECIMEN	REMOVED
58	24 in	PINE	SPECIMEN	REMOVED
59	24 in	PINE	SPECIMEN	REMOVED
60	24 in	PINE	SPECIMEN	REMOVED
61	24 in	GUM	SPECIMEN	REMOVED
62	24 in	OAK	SPECIMEN	REMOVED
63	6 in	DOGWOOD	NON-SPECIMEN	REMOVED
64	6 in	DOGWOOD	NON-SPECIMEN	SAVED
65	15 in	MAPLE	NON-SPECIMEN	REMOVED
66	15 in	MAPLE	NON-SPECIMEN	REMOVED
67	28 in	MAPLE	SPECIMEN	REMOVED
68	24 in	POPLAR	SPECIMEN	REMOVED
69	6 in	PERSIMMON	NON-SPECIMEN	REMOVED
70	24 in	POPLAR	SPECIMEN	REMOVED
71	5 in	PERSIMMON	NON-SPECIMEN	REMOVED
72	24 in	OAK	SPECIMEN	REMOVED
73	24 in	GUM	SPECIMEN	REMOVED
74	24 in	GUM	SPECIMEN	REMOVED
75	24 in	PINE	SPECIMEN	SAVED
76	15 in	OAK	NON-SPECIMEN	SAVED
77	15 in	OAK	NON-SPECIMEN	SAVED
78	24 in	OAK	SPECIMEN	SAVED
79	24 in	OAK	SPECIMEN	SAVED
80	18 in	HICKORY	NON-SPECIMEN	SAVED
81	24 in	OAK	SPECIMEN	SAVED
82	30 in	OAK	SPECIMEN	SAVED
83	24 in	POPLAR	SPECIMEN	SAVED
84	24 in	OAK	SPECIMEN	SAVED
85	5 in	DOGWOOD	NON-SPECIMEN	SAVED

TREE ID	DIAMETER	SPECIES	DESIGNATION	STATUS
86	18 in	POPLAR	NON-SPECIMEN	SAVED
87	5 in	DOGWOOD	NON-SPECIMEN	SAVED
88	5 in	DOGWOOD	NON-SPECIMEN	SAVED
89	5 in	DOGWOOD	NON-SPECIMEN	REMOVED
90	24 in	OAK	SPECIMEN	REMOVED
91	6 in	DOGWOOD	NON-SPECIMEN	REMOVED
92	6 in	DOGWOOD	NON-SPECIMEN	REMOVED
93	26 in	OAK	SPECIMEN	REMOVED
94	28 in	OAK	SPECIMEN	REMOVED
95	24 in	OAK	SPECIMEN	REMOVED
96	28 in	OAK	SPECIMEN	REMOVED
97	24 in	OAK	SPECIMEN	REMOVED
98	5 in	DOGWOOD	NON-SPECIMEN	REMOVED
99	24 in	OAK	SPECIMEN	REMOVED
100	26 in	OAK	SPECIMEN	REMOVED
101	26 in	OAK	SPECIMEN	REMOVED
102	24 in	OAK	SPECIMEN	REMOVED
103	30 in	OAK	SPECIMEN	REMOVED
104	24 in	OAK	SPECIMEN	SAVED
105	24 in	PINE	SPECIMEN	SAVED
106	24 in	OAK	SPECIMEN	SAVED
107	24 in	POPLAR	SPECIMEN	SAVED
108	27 in	OAK	SPECIMEN	SAVED
109	15 in	HARDWOOD	NON-SPECIMEN	SAVED
110	12 in	HARDWOOD	NON-SPECIMEN	SAVED
111	20 in	OAK	NON-SPECIMEN	SAVED
112	15 in	OAK	NON-SPECIMEN	SAVED
113	20 in	OAK	NON-SPECIMEN	SAVED
114	12 in	ELM	NON-SPECIMEN	SAVED
115	15 in	CEDAR	NON-SPECIMEN	SAVED
116	15 in	ELM	NON-SPECIMEN	SAVED
117	16 in	PINE	NON-SPECIMEN	SAVED
118	16 in	PINE	NON-SPECIMEN	REMOVED
119	30 in	PINE	SPECIMEN	SAVED
120	24 in	PINE	SPECIMEN	SAVED
121	24 in	PINE	SPECIMEN	REMOVED
122	24 in	PINE	SPECIMEN	REMOVED
123	5 in	DOGWOOD	NON-SPECIMEN	SAVED
124	8 in	PERSIMMON	NON-SPECIMEN	SAVED
125	24 in	PINE	SPECIMEN	SAVED
126	24 in	PINE	SPECIMEN	SAVED
127	24 in	PINE	SPECIMEN	SAVED

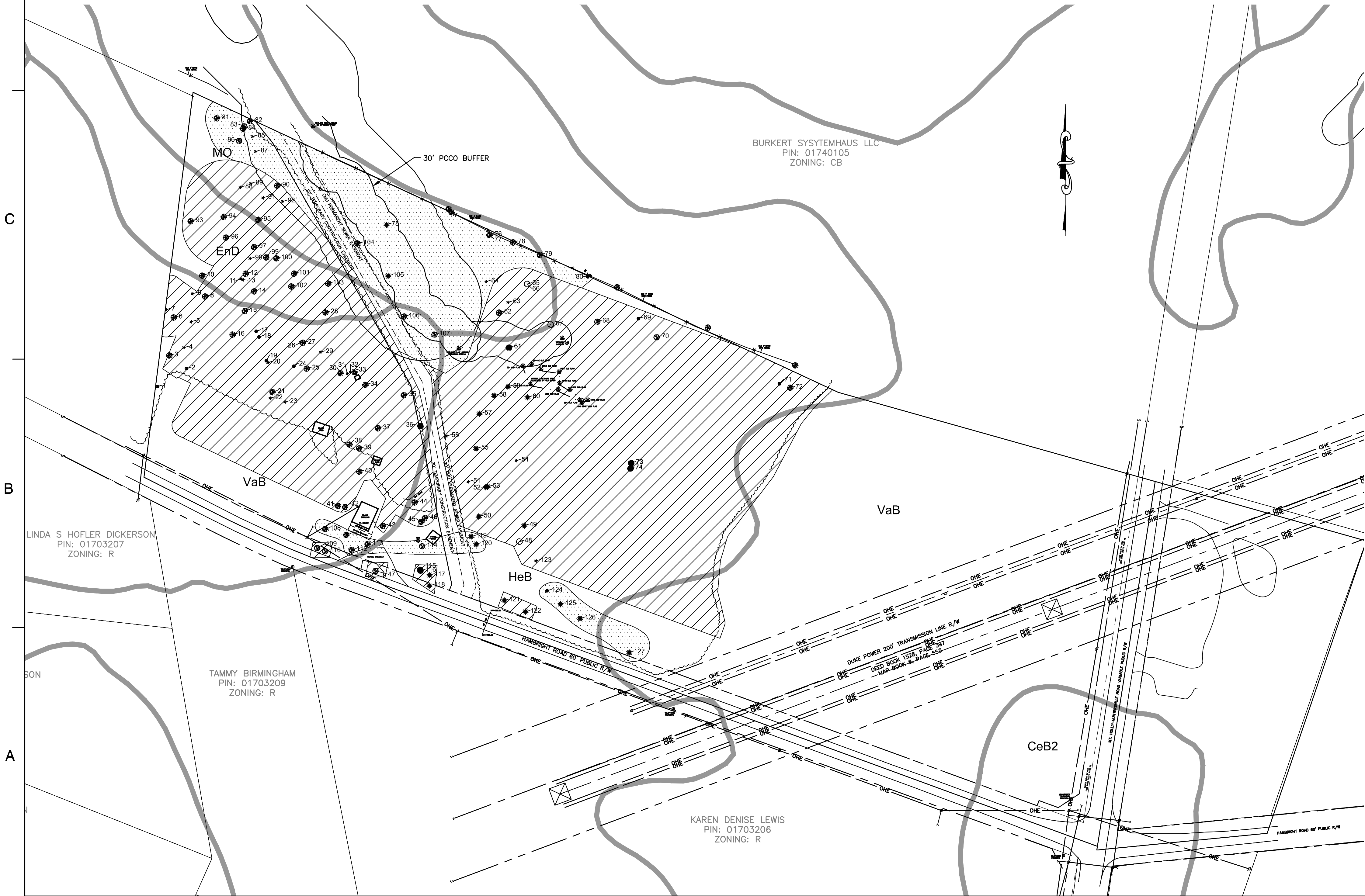




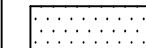
Dewberry Engineers Inc.
6135 Lakeview Rd - Suite 150
Charlotte, NC 28269
Phone: 704.509.9918
Fax: 704.509.9937
www.dewberry.com
NCBLS #F-0929

TOWN OF HUNTERSVILLE
SPORTS VILLAGE

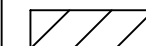
HUNTERSVILLE, NORTH CAROLINA



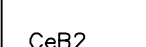
LEGEND




TREE SAVE AREA



TREE CANOPY TO BE REMOVED



CeB2 SOIL GROUP



SOIL GROUP BOUNDARY

EXISTING CANOPY (sf)	PRESERVED CANOPY (sf)	% CANOPY PRESERVED
519,966	138,516	26.66%

HYDROLOGIC SOIL GROUP SUMMARY				
SYMBOL	NAME	RATING	ACRES	PERCENT
CeB2	CECIL SANDY CLAY LOAM, 2-8% SLOPES	B	0.8	3.3%
EnD	ENON SANDY LOAM, 8-15% SLOPES	C	1.3	5.4%
HeB	HELENA SANDY LOAM, 2-8% SLOPES	D	6.8	29.6%
MO	MONACAN LOAM, 0-2% SLOPES	B/D	1.0	4.5%
VaB	VANCE SANDY LOAM, 2-8% SLOPES	C	13.2	57.1%
TOTAL			23.1	100%

SPECIMEN TREES CALCULATIONS				
TOTAL EXISTING SPECIMEN TREES	EXISTING SPECIMEN TREES TO BE REMOVED	% SPECIMEN TREES PRESERVED	SPECIMEN TREES TO BE MITIGATED	NON-SPECIMEN TREES TO BE REMOVED
71	54	23.94%	5	36

TREE MITIGATION CALCULATIONS	
MIN. NUMBER OF SPECIMEN TREES REQUIRED TO BE SAVED	71 x 30% = 21.3 → 22 TREES
NUMBER OF SPECIMEN TREES PROPOSED TO BE SAVED	71 - 54 = 17 TREES
NUMBER OF TREES REMOVED OVER ORDINANCE	22 - 17 = 5 TREES
TOTAL CALIPER OF TREES REMOVED OVER ORDINANCE (AVG. DBH = 24")	24" x 5 = 120"
NUMBER OF 2" CALIPER REPLACEMENT TREES REQUIRED	120" ÷ 30" = 4 TREES

- TREE MITIGATION NOTES
- CALCULATIONS PERFORMED IN ACCORDANCE WITH ARTICLE 7.4.2(f) OF THE TOWN OF HUNTERSVILLE ZONING ORDINANCE.
 - OWNER TO PLANT 18 TREES OF 2" CALIPER OR GREATER AS MITIGATION FOR REMOVAL OF 5 SPECIMEN TREES. LOCATION OF TREES ON SITE TO BE DETERMINED DURING DESIGN PHASE.
 - IF SITE CONDITIONS ARE NOT CONDUVIVE FOR HEALTHY TREE REPLACEMENT ON SITE, THE DEVELOPER MAY CONTRIBUTE TO A TREE FUND/BANK SET UP BY THE TOWN FOR THE PLANTING AND DISTRIBUTION OF SUCH TREES ELSEWHERE IN THE COMMUNITY. A COMBINATION IN LIEU OF PLANTING IS ACCEPTABLE. THE AMOUNT OF CONTRIBUION IS BASED ON THE TOTAL COST OF THE REQUIRED MITIGATION TREES PLUS THAT OF THEIR INSTALLATION.



KEY PLAN

SCALE: 1" = 100'



NO.	DATE	BY	DESCRIPTION
1	10/12/16	ADS	TOWN COMMENTS

DRAWN BY _____

APPROVED BY _____

CHECKED BY _____

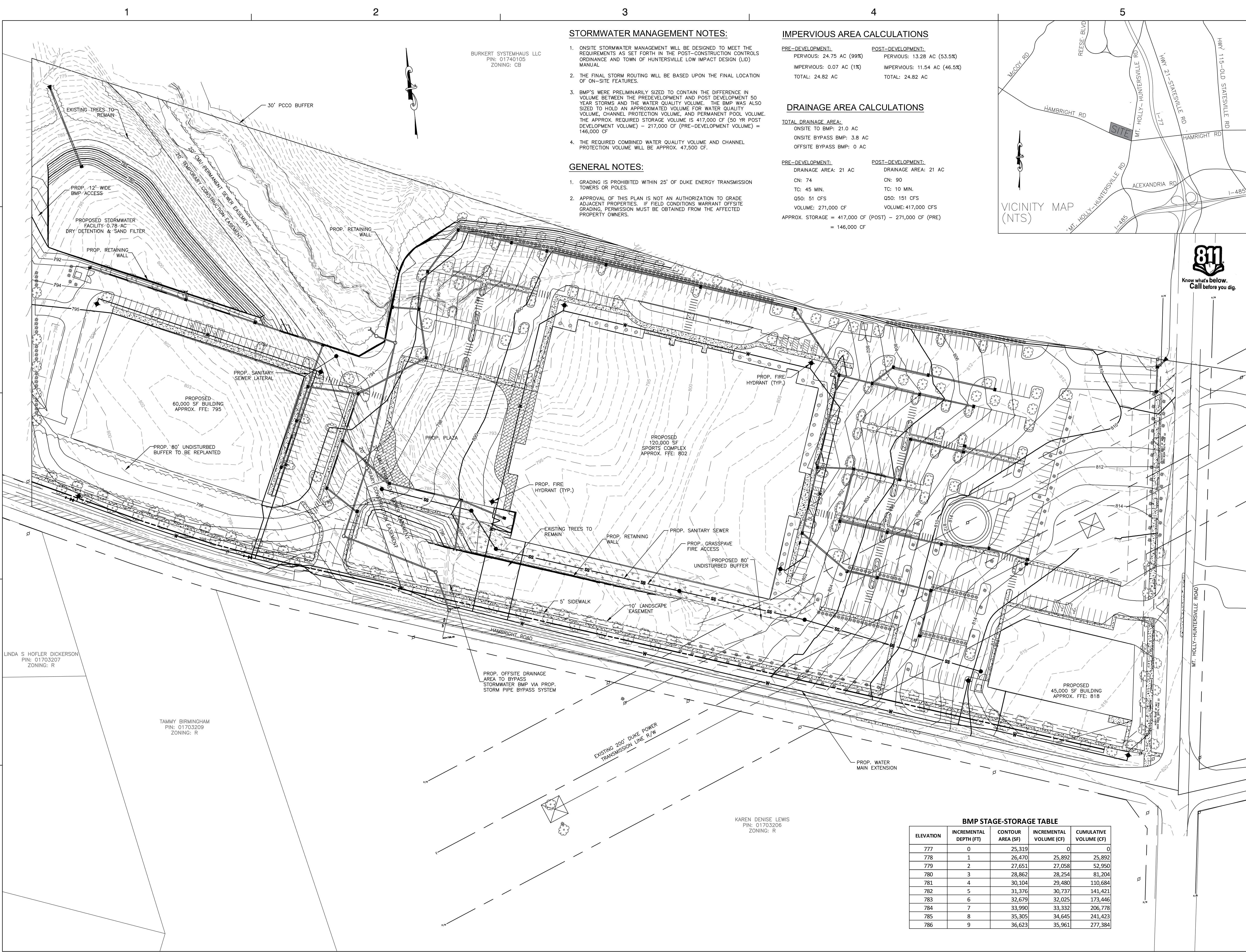
DATE JULY 29, 2016

TITLE

TREE
PRESERVATION PLAN

PROJECT NO. 50083178

SP4



STORMWATER MANAGEMENT NOTES:

1. ONSITE STORMWATER MANAGEMENT WILL BE DESIGNED TO MEET THE REQUIREMENTS AS SET FORTH IN THE POST-CONSTRUCTION CONTROLS ORDINANCE AND TOWN OF HUNTERSVILLE LOW IMPACT DESIGN (LID) MANUAL
2. THE FINAL STORM ROUTING WILL BE BASED UPON THE FINAL LOCATION OF ON-SITE FEATURES.
3. BMP'S WERE PRELIMINARILY SIZED TO CONTAIN THE DIFFERENCE IN VOLUME BETWEEN THE PREDEVELOPMENT AND POST DEVELOPMENT 50 YEAR STORMS AND THE WATER QUALITY VOLUME. THE BMP WAS ALSO SIZED TO HOLD AN APPROXIMATED VOLUME FOR WATER QUALITY VOLUME, CHANNEL PROTECTION VOLUME, AND PERMANENT POOL VOLUME. THE APPROX. REQUIRED STORAGE VOLUME IS 417,000 CF (50 YR POST DEVELOPMENT VOLUME) - 217,000 CF (PRE-DEVELOPMENT VOLUME) = 146,000 CF
4. THE REQUIRED COMBINED WATER QUALITY VOLUME AND CHANNEL PROTECTION VOLUME WILL BE APPROX. 47,500 CF.

GENERAL NOTES:

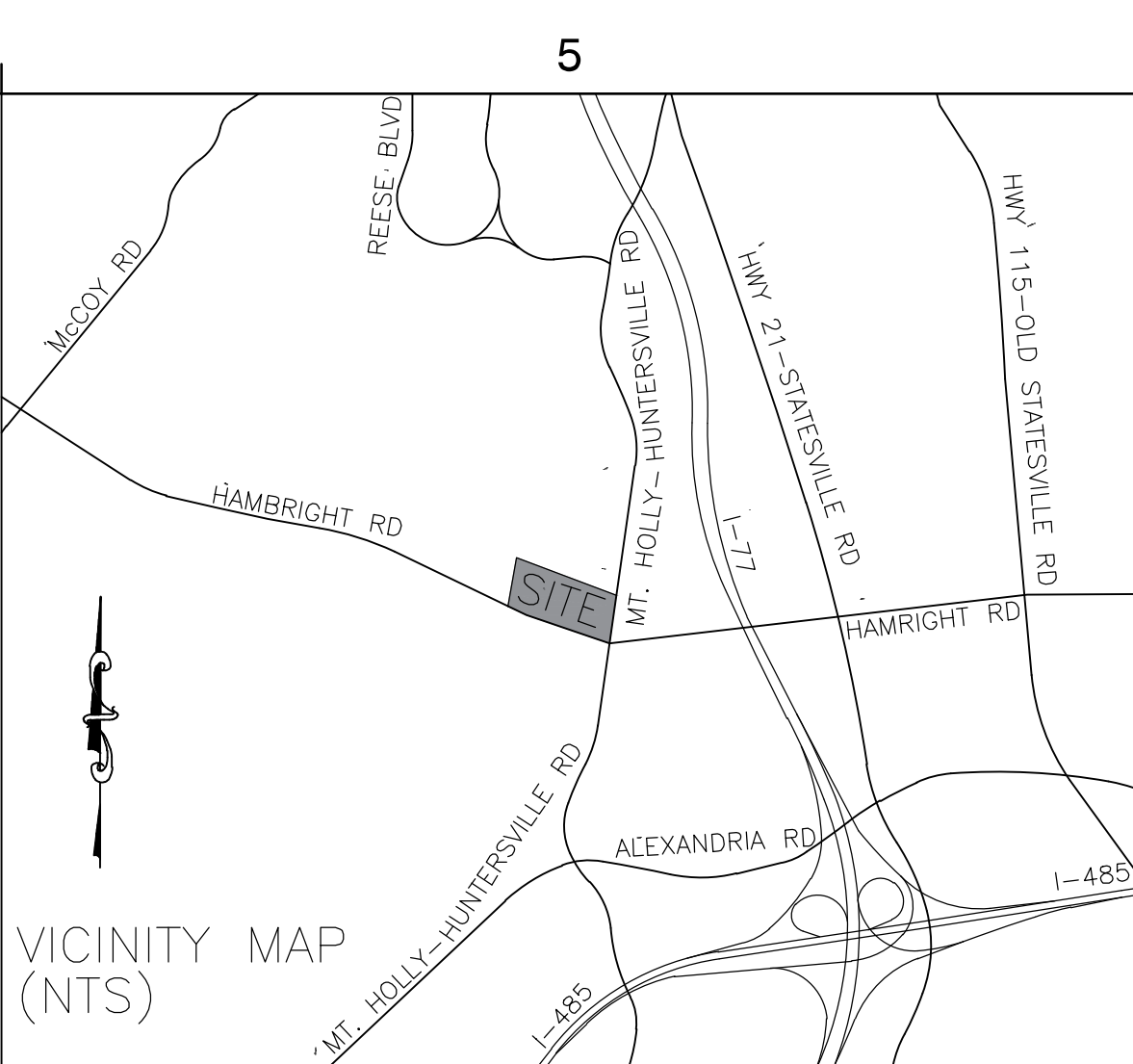
1. GRADING IS PROHIBITED WITHIN 25' OF DUKE ENERGY TRANSMISSION TOWERS OR POLES.
2. APPROVAL OF THIS PLAN IS NOT AN AUTHORIZATION TO GRADE ADJACENT PROPERTIES. IF FIELD CONDITIONS WARRANT OFFSITE GRADING, PERMISSION MUST BE OBTAINED FROM THE AFFECTED PROPERTY OWNERS.

IMPERVIOUS AREA CALCULATIONS

PRE-DEVELOPMENT:	POST-DEVELOPMENT:
PERVIOUS: 24.75 AC (99%)	PERVIOUS: 13.28 AC (53.5%)
IMPERVIOUS: 0.07 AC (1%)	IMPERVIOUS: 11.54 AC (46.5%)
TOTAL: 24.82 AC	TOTAL: 24.82 AC

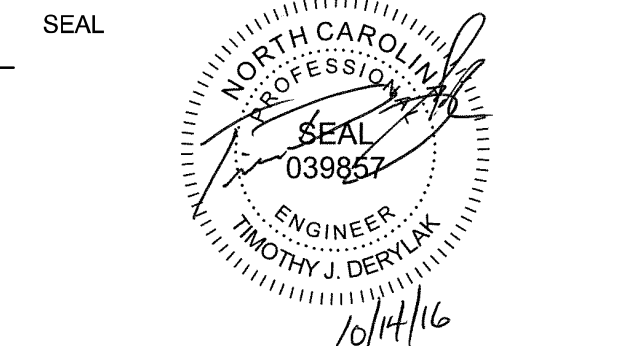
DRAINAGE AREA CALCULATIONS

TOTAL DRAINAGE AREA:	ON-SITE TO BMP: 21.0 AC	ON-SITE BYPASS BMP: 3.8 AC	OFF-SITE BYPASS BMP: 0 AC
PRE-DEVELOPMENT:	POST-DEVELOPMENT:		
DRAINAGE AREA: 21 AC	DRAINAGE AREA: 21 AC		
CN: 74	CN: 90		
TC: 45 MIN.	TC: 10 MIN.		
Q50: 51 CFS	Q50: 151 CFS		
VOLUME: 271,000 CF	VOLUME: 417,000 CFS		
APPROX. STORAGE = 417,000 CF (POST) - 271,000 CF (PRE)			
= 146,000 CF			

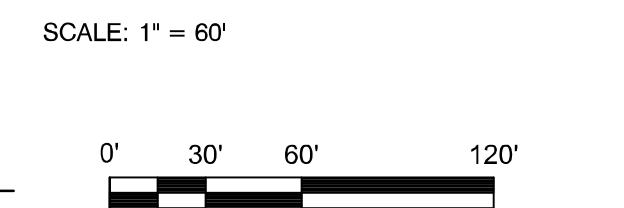


Dewberry Engineers Inc.
6135 Lakeview Rd - Suite 150
Charlotte, NC 28269
Phone: 704.509.9818
Fax: 704.509.9937
www.dewberry.com
NCBELS #F-0929

HUNTERSVILLE SPORTS VILLAGE
HUNTERSVILLE, NORTH CAROLINA



KEY PLAN



No.	DATE	BY	DESCRIPTION
1	10/12/16	TD	TOWN COMMENTS

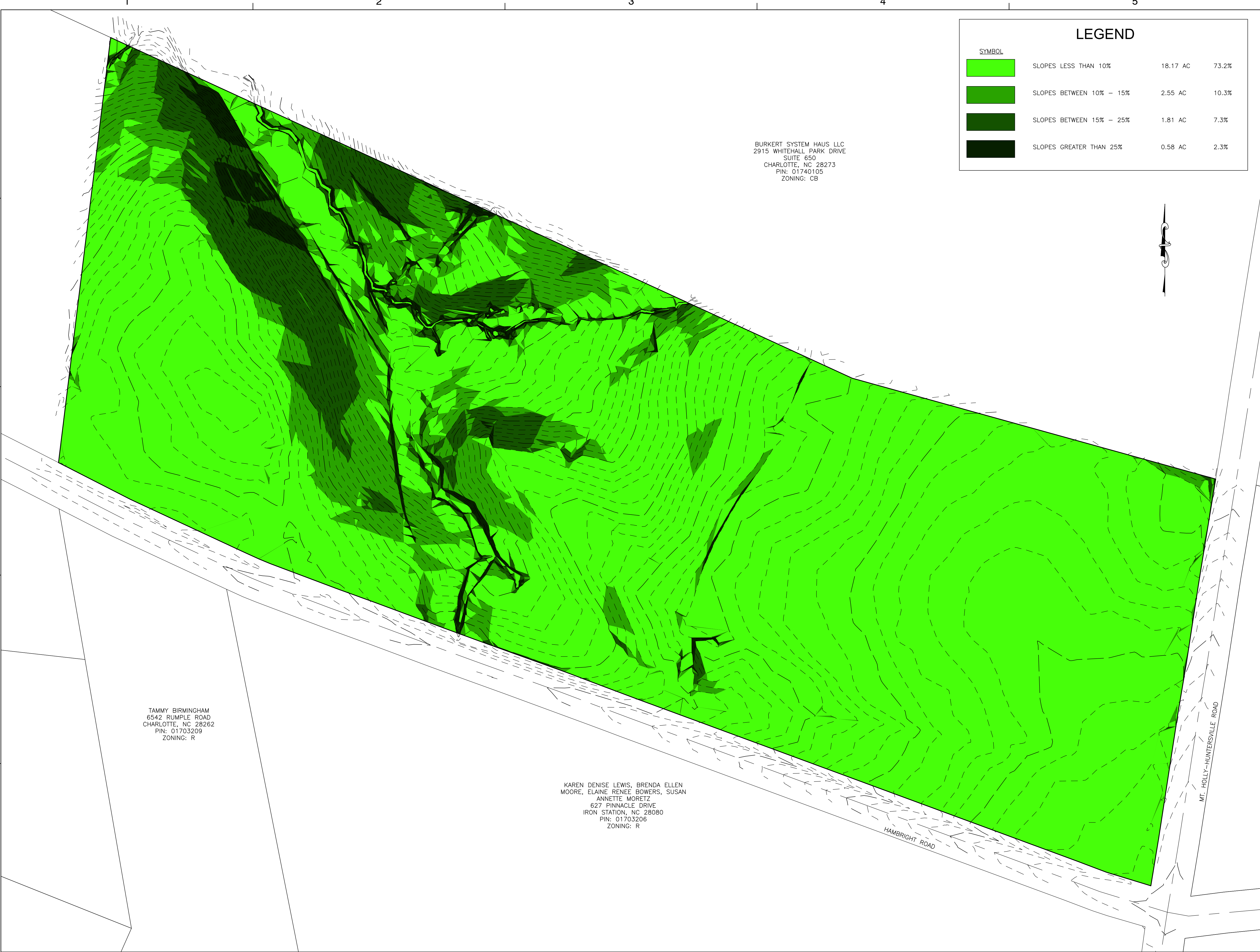
DRAWN BY _____
APPROVED BY _____
CHECKED BY _____
DATE JULY 29, 2016
TITLE _____

PRELIMINARY GRADING
& STORM WATER
CONCEPT PLAN

PROJECT NO. 50083178

SP5

BMP STAGE-STORAGE TABLE				
ELEVATION	INCREMENTAL DEPTH (FT)	CONTOUR AREA (SF)	INCREMENTAL VOLUME (CF)	CUMULATIVE VOLUME (CF)
777	0	25,319	0	0
778	1	26,470	25,892	25,892
779	2	27,651	27,058	52,950
780	3	28,862	28,254	81,204
781	4	30,104	29,480	110,684
782	5	31,376	30,737	141,421
783	6	32,679	32,025	173,446
784	7	33,990	33,332	206,778
785	8	35,305	34,645	241,423
786	9	36,623	35,961	277,384



BURKERT SYSTEM HAUS LLC
2915 WHITEHALL PARK DRIVE
SUITE 650
CHARLOTTE, NC 28273
PIN: 01740105
ZONING: CB

TAMMY BIRMINGHAM
6542 RUMPLE ROAD
CHARLOTTE, NC 28262
PIN: 01703209
ZONING: R

KAREN DENISE LEWIS, BRENDA ELLEN
MOORE, ELAINE RENEE BOWERS, SUSAN
ANNETTE MORETZ
627 PINNACLE DRIVE
IRON STATION, NC 28080
PIN: 01703206
ZONING: R

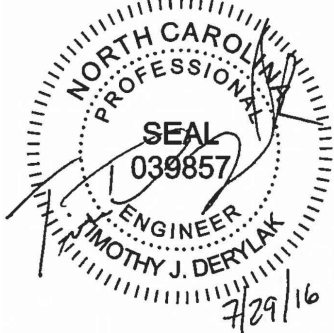
LEGEND			
SYMBOL			
<div></div>	SLOPES LESS THAN 10%	18.17 AC	73.2%
<div></div>	SLOPES BETWEEN 10% – 15%	2.55 AC	10.3%
<div></div>	SLOPES BETWEEN 15% – 25%	1.81 AC	7.3%
<div></div>	SLOPES GREATER THAN 25%	0.58 AC	2.3%



Dewberry Engineers Inc.
6135 Lakeview Rd - Suite 150
Charlotte, NC 28269
Phone: 704.509.9918
Fax: 704.509.9937
www.dewberry.com
NCBELS #F-0929

HUNTERSVILLE SPORTS VILLAGE
HUNTERSVILLE, NORTH CAROLINA

SEAL



KEY PLAN

SCALE: 1" = 60'



No.	DATE	BY	Description

REVISIONS

DRAWN BY	
APPROVED BY	
CHECKED BY	
DATE	JULY 29, 2016
TITLE	

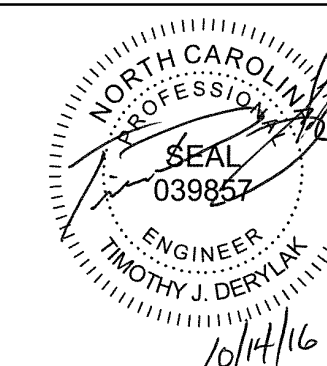
SLOPE ANALYSIS

PROJECT NO. 50083178

SP6

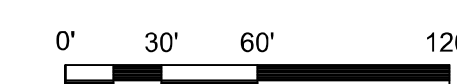
HUNTERSVILLE SPORTS VILLAGE
HUNTERSVILLE, NORTH CAROLINA

SEA



KEY PLAN

SCALE: 1" = 60'

[illegible]

1	10/12/16	TD	TOWN COMMENT
No.	DATE	BY	Description

REVISIONS

DRAWN BY _____

APPROVED BY _____

CHECKED BY _____

DATE JULY 29, 2016

TITLE

TURNING MOVEMENTS

PROJECT NO. 50083178

SP7

